

# CD3D & CD3E Antibody (FITC), Rabbit MAb



Sino Biological  
Biological Solution Specialist

Catalog Number: CT026-R301-F

EliteRmab® is a registered trademark of Sino Biological Inc.

GENERAL INFORMATION	
Immunogen:	Recombinant Human CD3D & CD3E Heterodimer protein (Catalog#CT026-H0323H)
Reagents:	FITC-conjugated Rabbit monoclonal antibody
Preparation	This antibody was obtained from a rabbit immunized with purified, recombinant Human CD3D & CD3E Heterodimer (Catalog#CT026-H0323H; P04234 & P07766; Met1-Ala105 & Met1-Asp126) and conjugated with FITC under optimum conditions, the unreacted FITC was removed.
Ig Type:	Rabbit IgG
Clone ID:	301
Specificity:	Human CD3D & CD3E
Concentration:	10 µl/Test, 0.1 mg/ml
Formulation:	Aqueous solution containing 0.5% BSA and 0.09% sodium azide
Storage:	This antibody can be stored at 2℃-8℃ for twelve months without detectable loss of activity. Protected from prolonged exposure to light. Do not freeze ! Sodium azide is toxic to cells and should be disposed of properly. Flush with large volumes of water during disposal.
Alternative Names:	CD3-DELTA,IMD19,T3D
APPLICATIONS	
Applications:	FCM

*Please Note: Optimal concentrations/dilutions should be determined by the end user.*

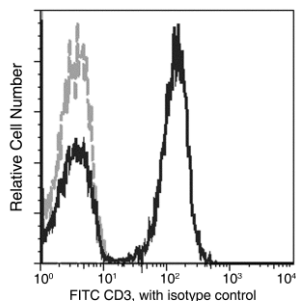
# CD3D & CD3E Antibody (FITC), Rabbit MAb

Catalog Number: CT026-R301-F



Sino Biological  
Biological Solution Specialist

EliteRmab® is a registered trademark of Sino Biological Inc.



Flow cytometric analysis of Human CD3E expression on human whole blood lymphocytes. Cells were stained with FITC-conjugated anti-Human CD3E. The fluorescence histograms were derived from gated events with the forward and side light-scatter characteristics of viable lymphocytes.

Flow cytometry was performed on a BD FACSCalibur flow cytometry system. Please refer to [www.sinobiological.com/Flow-Cytometry-FACS-Protocols-a-750.html](http://www.sinobiological.com/Flow-Cytometry-FACS-Protocols-a-750.html) for technical protocols.