

Cynomolgus DPP4 / DPPIV / CD26 Protein (Fc Tag)

Catalog Number: 90180-C01H



Sino Biological
Biological Solution Specialist

General Information

Gene Name Synonym:

DPP4

Protein Construction:

A DNA sequence encoding the cynomolgus DPP4 (F6VRB0) (Asp34-Pro766) was expressed with the Fc region of human IgG1 at the N-terminus.

Source: Cynomolgus

Expression Host: HEK293 Cells

QC Testing

Purity: > 90 % as determined by SDS-PAGE

Bio Activity:

Measured by its ability to cleave the fluorogenic peptide substrate, Gly-Pro-AMC(GP-AMC). The specific activity is > 3,000 pmoles/min/μg.

Endotoxin:

< 1.0 EU per μg of the protein as determined by the LAL method

Stability:

Samples are stable for up to twelve months from date of receipt at -70 °C

Predicted N terminal: Glu

Molecular Mass:

The recombinant cynomolgus DPP4 is a disulfide-linked homodimer. The reduced monomer comprises 993 amino acids and has a calculated molecular mass of 112.9 KDa. The apparent molecular mass of the protein is approximately 113 KDa in SDS-PAGE.

Formulation:

Lyophilized from sterile 25 mM MES, 0.7 M NaCl, pH 4.9.

Normally 5 % - 8 % trehalose, mannitol and 0.01% Tween80 are added as protectants before lyophilization. Specific concentrations are included in the hardcopy of COA. Please contact us for any concerns or special requirements.

Usage Guide

Storage:

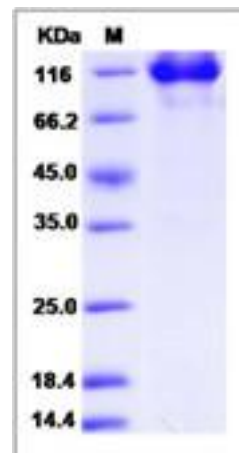
Store it under sterile conditions at -20°C to -80°C upon receiving. Recommend to aliquot the protein into smaller quantities for optimal storage.

Avoid repeated freeze-thaw cycles.

Reconstitution:

Detailed reconstitution instructions are sent along with the products.

SDS-PAGE:



Protein Description

Dipeptidyl peptidase-4 (DPP4) or adenosine deaminase complexing protein 2 (ADCP 2) or T-cell activation antigen CD26 is a serine exopeptidase belonging to the S9B protein family that cleaves X-proline dipeptides from the N-terminus of polypeptides, such as chemokines, neuropeptides, and peptide hormones. The enzyme is a type II transmembrane glycoprotein, expressed on the surface of many cell types. It is also present in serum and other body fluids in a truncated form (sCD26/DPPIV). The soluble CD26 (sCD26) as a tumour marker for the detection of colorectal cancer (CRC) and advanced adenomas. As both a regulatory enzyme and a signalling factor, DPP4 has been evaluated and described in many studies. DPP4 inhibition results in increased blood concentration of the incretin hormones glucagon-like peptide-1 (GLP-1) and gastric inhibitory polypeptide (GIP). This causes an increase in glucose-dependent stimulation, resulting in a lowering of blood glucose levels. Recent studies have shown that DPP4 inhibitors can induce a significant reduction in glycosylated haemoglobin (HbA1c) levels, either as monotherapy or as a combination with other antidiabetic agents. Research has also demonstrated that DPP4 inhibitors portray a very low risk of hypoglycaemia development, and are a new pharmacological class of drugs for treating Type 2 diabetes.

References

1. Doupis J, *et al.* (2008) DPP4 inhibitors: a new approach in diabetes treatment. *Adv Ther.* 25(7): 627-43.
2. Havre PA, *et al.* (2008) The role of CD26/dipeptidyl peptidase IV in cancer. *Front Biosci.* 13: 1634-45.
3. De Chiara L, *et al.* (2009) Soluble CD26 levels and its association to epidemiologic parameters in a sample population. *Dis Markers.* 7(6): 311-6.

Manufactured By Sino Biological Inc., FOR RESEARCH USE ONLY. NOT FOR USE IN HUMANS.

For US Customer: Fax: 267-657-0217 • Tel: 215-583-7898

Global Customer: Fax: +86-10-5862-8288 • Tel: +86-400-890-9989 • <http://www.sinobiological.com>