

DPP4 / CD26 Antibody, Rabbit MAb



Sino Biological
Biological Solution Specialist

Catalog Number: 50718-R009

EliteRmab® is a registered trademark of Sino Biological Inc.

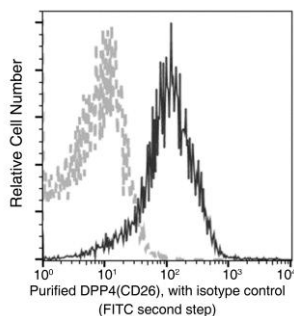
GENERAL INFORMATION	
Immunogen:	Recombinant Mouse DPP4 / CD26 Protein (Catalog#50718-M08H)
Preparation	This antibody was obtained from a rabbit immunized with purified, recombinant Mouse DPP4 / CD26 (rM DPP4 / CD26; Catalog#50718-M08H; NP_034204.1; Ser29-His760).
Ig Type:	Rabbit IgG
Clone ID:	009
Specificity:	Mouse DPP4 / CD26
Formulation:	0.2 µm filtered solution in PBS
Storage:	This antibody can be stored at 2°C-8°C for one month without detectable loss of activity. Antibody products are stable for twelve months from date of receipt when stored at -20°C to -80°C. Preservative-Free. Sodium azide is recommended to avoid contamination (final concentration 0.05%-0.1%). It is toxic to cells and should be disposed of properly. Avoid repeated freeze-thaw cycles.
APPLICATIONS	
Applications:	FCM
RECOMMENDED CONCENTRATION	
Flow Cytometry	FCM: 1:25-1:100

Please Note: Optimal concentrations/dilutions should be determined by the end user.



Catalog Number: 50718-R009

EliteRmab® is a registered trademark of Sino Biological Inc.



Flow cytometric analysis of Mouse DPP4(CD26) expression on BABL/c splenocytes. Cells were stained with purified anti-Mouse DPP4(CD26), then a FITC-conjugated second step antibody. The fluorescence histograms were derived from gated events with the forward and side light-scatter characteristics of intact cells.

Flow cytometry was performed on a BD FACSCalibur flow cytometry system. Please refer to www.sinobiological.com/Flow-Cytometry-FACS-Protocols-a-750.html for technical protocols.