

# DPP4 / CD26 Antibody (APC), Rabbit MAb



Sino Biological  
Biological Solution Specialist

Catalog Number: 50718-R007-A

EliteRmab® is a registered trademark of Sino Biological Inc.

## GENERAL INFORMATION

<b>Immunogen:</b>	Recombinant Mouse DPP4 / CD26 Protein (Catalog#50718-M08H)
<b>Reagents:</b>	APC-conjugated Rabbit monoclonal antibody
<b>Preparation</b>	This antibody was obtained from a rabbit immunized with purified, recombinant Mouse DPP4 / CD26 (rM DPP4 / CD26; Catalog#50718-M08H; NP_034204.1; Ser29-His760) and conjugated with APC under optimum conditions, the unreacted APC was removed.
<b>Ig Type:</b>	Rabbit IgG
<b>Clone ID:</b>	007
<b>Specificity:</b>	Mouse DPP4 / CD26
<b>Concentration:</b>	5 µl/Test, 0.1 mg/ml
<b>Formulation:</b>	Aqueous solution containing 0.5% BSA and 0.09% sodium azide
<b>Storage:</b>	This antibody is stable for 12 months from date of receipt when stored at 2°C-8°C. Protected from prolonged exposure to light. Do not freeze! Sodium azide is toxic to cells and should be disposed of properly. Flush with large volumes of water during disposal.

## APPLICATIONS

<b>Applications:</b>	FCM
----------------------	-----

## RECOMMENDED CONCENTRATION

**Please Note:** Optimal concentrations/dilutions should be determined by the end user.

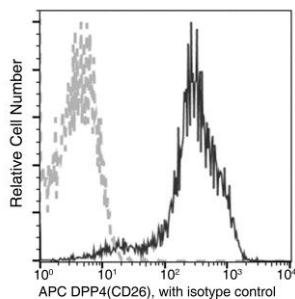
# DPP4 / CD26 Antibody (APC), Rabbit MAb

Catalog Number: 50718-R007-A



Sino Biological  
Biological Solution Specialist

EliteRmab® is a registered trademark of Sino Biological Inc.



Flow cytometric analysis of Mouse DPP4(CD26) expression on BABL/c splenocytes. Cells were stained with APC-conjugated anti-Mouse DPP4(CD26). The fluorescence histograms were derived from gated events with the forward and side light-scatter characteristics of intact cells.

Flow cytometry was performed on a BD FACSCalibur flow cytometry system. Please refer to [www.sinobiological.com/Flow-Cytometry-FACS-Protocols-a-750.html](http://www.sinobiological.com/Flow-Cytometry-FACS-Protocols-a-750.html) for technical protocols.