

# EphB3 / HEK2 Antibody (PE), Rabbit MAb



Sino Biological  
Biological Solution Specialist

Catalog Number: 50581-R001-P

EliteRmab® is a registered trademark of Sino Biological Inc.

## GENERAL INFORMATION

<b>Immunogen:</b>	Recombinant Mouse EphB3 / HEK2 protein (Catalog#50581-M08H)
<b>Reagents:</b>	PE-conjugated Rabbit monoclonal antibody
<b>Preparation</b>	This antibody was obtained from a rabbit immunized with purified, recombinant Mouse EphB3 / HEK2 (rM EphB3 / HEK2; Catalog#50581-M08H; NP_034273.1; Met1-Thr537) and conjugated with PE under optimum conditions, the unreacted PE was removed.
<b>Ig Type:</b>	Rabbit IgG
<b>Clone ID:</b>	001
<b>Specificity:</b>	Mouse EphB3 / HEK2
<b>Concentration:</b>	10 µl/Test, 0.1 mg/ml
<b>Formulation:</b>	Aqueous solution containing 0.5% BSA and 0.09% sodium azide
<b>Storage:</b>	This antibody can be stored at 2°C-8°C for twelve months without detectable loss of activity. Protected from prolonged exposure to light. Do not freeze ! Sodium azide is toxic to cells and should be disposed of properly. Flush with large volumes of water during disposal.
<b>Alternative Names:</b>	AW456895,Cek10,Etk2,HEK2,MDK5,Sek4,Tyro6

## APPLICATIONS

<b>Applications:</b>	FCM
----------------------	-----

*Please Note: Optimal concentrations/dilutions should be determined by the end user.*

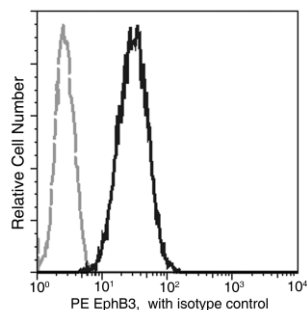
# EphB3 / HEK2 Antibody (PE), Rabbit MAb

Catalog Number: 50581-R001-P



Sino Biological  
Biological Solution Specialist

EliteRmab® is a registered trademark of Sino Biological Inc.



Flow cytometric analysis of Mouse EphB3 expression on CoLo205 cells. Cells were stained with PE-conjugated anti-Mouse EphB3. The fluorescence histograms were derived from gated events with the forward and side light-scatter characteristics of intact cells.

Flow cytometry was performed on a BD FACSCalibur flow cytometry system. Please refer to [www.sinobiological.com/Flow-Cytometry-FACS-Protocols-a-750.html](http://www.sinobiological.com/Flow-Cytometry-FACS-Protocols-a-750.html) for technical protocols.