

CD8a Antibody (PE), Rabbit MAb



Sino Biological
Biological Solution Specialist

Catalog Number: 50389-R208-P

EliteRmab® is a registered trademark of Sino Biological Inc.

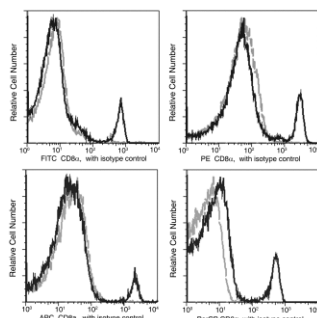
GENERAL INFORMATION	
Immunogen:	Recombinant Mouse CD8a protein (Catalog#50389-M08H)
Reagents:	PE-conjugated Rabbit monoclonal antibody
Preparation	This antibody was obtained from a rabbit immunized with purified, recombinant Mouse CD8a (rM CD8a; Catalog#50389-M08H; NP_001074579.1; Met 1-Tyr 196) and conjugated with PE under optimum conditions, the unreacted PE was removed.
Ig Type:	Rabbit IgG
Clone ID:	208
Specificity:	Mouse CD8a
Concentration:	5 µl/Test, 0.1 mg/ml
Formulation:	Aqueous solution containing 0.5% BSA and 0.09% sodium azide
Storage:	This antibody is stable for 12 months from date of receipt when stored at 2°C-8°C. Protected from prolonged exposure to light. Do not freeze! Sodium azide is toxic to cells and should be disposed of properly. Flush with large volumes of water during disposal.
APPLICATIONS	
Applications:	FCM
RECOMMENDED CONCENTRATION	

Please Note: Optimal concentrations/dilutions should be determined by the end user.



Catalog Number: 50389-R208-P

EliteRmab® is a registered trademark of Sino Biological Inc.



Flow cytometric analysis of CD8α expression on spleen lymphocytes. BALB/c splenocytes were stained with PE-conjugated anti-Mouse CD8α (50389-R208-P). The histogram were derived from the gated events based on light scattering characteristics of lymphocytes.

Flow cytometry was performed on a BD FACSCalibur flow cytometry system. Please refer to www.sinobiological.com/Flow-Cytometry-FACS-Protocols-a-750.html for technical protocols.