

FCGR3 Antibody (PE), Rabbit MAb



Sino Biological
Biological Solution Specialist

Catalog Number: 50326-R002-P

EliteRmab® is a registered trademark of Sino Biological Inc.

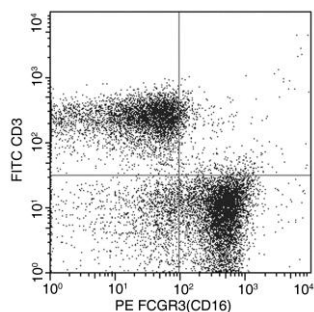
GENERAL INFORMATION	
Immunogen:	Recombinant Mouse CD16 / FCGR3 protein (Catalog#50326-M08H)
Reagents:	PE-conjugated Rabbit monoclonal antibody
Preparation	This antibody was obtained from a rabbit immunized with purified, recombinant Mouse CD16 / FCGR3 (rM CD16 / FCGR3; Catalog#50326-M08H; P08508-1; Met1-Thr215) and conjugated with PE under optimum conditions, the unreacted PE was removed.
Ig Type:	Rabbit IgG
Clone ID:	002
Specificity:	Mouse CD16 / FCGR3
Concentration:	10 µl/Test, 0.1 mg/ml
Formulation:	Aqueous solution containing 0.5% BSA and 0.09% sodium azide
Storage:	This antibody can be stored at 2°C-8°C for twelve months without detectable loss of activity. Protected from prolonged exposure to light. Do not freeze ! Sodium azide is toxic to cells and should be disposed of properly. Flush with large volumes of water during disposal.
Alternative Names:	CD16
APPLICATIONS	
Applications:	FCM

Please Note: Optimal concentrations/dilutions should be determined by the end user.



Catalog Number: 50326-R002-P

EliteRmab® is a registered trademark of Sino Biological Inc.



Flow cytometric analysis of Mouse FCGR3(CD16) expression on mouse splenocytes. BABL/c splenocytes were stained with PE-conjugated anti-Mouse FCGR3(CD16) and FITC-conjugated anti-Mouse CD3 (BD Pharmingen™ Cat. No. 553061). The dot plots were derived from events with the forward and side light-scatter characteristics of intact cells.

Flow cytometry was performed on a BD FACSCalibur flow cytometry system. Please refer to www.sinobiological.com/Flow-Cytometry-FACS-Protocols-a-750.html for technical protocols.