

# CD25 / IL2RA Antibody (APC), Rabbit MAb



Sino Biological  
Biological Solution Specialist

Catalog Number: 50292-R049-A

EliteRmab® is a registered trademark of Sino Biological Inc.

GENERAL INFORMATION	
Immunogen:	Recombinant Mouse CD25 / IL2RA protein (Catalog#50292-M08H)
Reagents:	APC-conjugated Rabbit monoclonal antibody
Preparation	This antibody was obtained from a rabbit immunized with purified, recombinant Mouse CD25 / IL2RA (rM CD25 / IL2RA; Catalog#50292-M08H; NP_032393.3; Met1-Lys236) and conjugated with APC under optimum conditions, the unreacted APC was removed.
Ig Type:	Rabbit IgG
Clone ID:	049
Specificity:	Mouse CD25 / IL2RA
Concentration:	2 µl/Test, 0.1 mg/ml
Formulation:	Aqueous solution containing 0.5% BSA and 0.09% sodium azide
Storage:	This antibody can be stored at 2℃-8℃ for twelve months without detectable loss of activity. Protected from prolonged exposure to light. Do not freeze ! Sodium azide is toxic to cells and should be disposed of properly. Flush with large volumes of water during disposal.
Alternative Names:	CD25,IL2r,Ly-43
APPLICATIONS	
Applications:	FCM

**Please Note: Optimal concentrations/dilutions should be determined by the end user.**

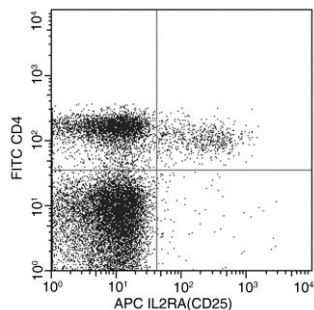
# CD25 / IL2RA Antibody (APC), Rabbit MAb

Catalog Number: 50292-R049-A



Sino Biological  
Biological Solution Specialist

EliteRmab® is a registered trademark of Sino Biological Inc.



Flow cytometric analysis of mouse IL2RA(CD25) expression on mouse splenocytes. BABL/c splenocytes were stained with APC-conjugated anti-Mouse IL2RA(CD25) and FITC-conjugated anti-Mouse CD4(BD Pharmingen™ Cat. No.557307).

Flow cytometry was performed on a BD FACSCalibur flow cytometry system. Please refer to [www.sinobiological.com/Flow-Cytometry-FACS-Protocols-a-750.html](http://www.sinobiological.com/Flow-Cytometry-FACS-Protocols-a-750.html) for technical protocols.