

# Mouse ACE2 / Angiotensin-Converting Enzyme 2 Protein (His & Fc Tag)

Catalog Number: 50249-M03H



Sino Biological  
Biological Solution Specialist

## General Information

### Gene Name Synonym:

2010305L05Rik

### Protein Construction:

A DNA sequence encoding the mouse ACE2 isoform 1 (Q8R0I0-1) extracellular domain (Met 1-Thr 740) was fused with the C-terminal polyhistidine-tagged Fc region of human IgG1 at the C-terminus.

**Source:** Mouse

**Expression Host:** HEK293 Cells

## QC Testing

**Purity:** > 95 % as determined by SDS-PAGE

### Endotoxin:

< 1.0 EU per µg of the protein as determined by the LAL method

### Stability:

Samples are stable for up to twelve months from date of receipt at -70 °C

**Predicted N terminal:** Gln 18

### Molecular Mass:

The secreted recombinant mouse ACE2/Fc is a disulfide-linked homodimer. The reduced monomer comprises 971 amino acids and has a predicted molecular mass of 112 kDa. As a result of glycosylation, it migrates as an approximately 130 kDa band in SDS-PAGE under reducing conditions.

### Formulation:

Lyophilized from sterile 20mM Tris, 150mM NaCl, 1mM ZnCl<sub>2</sub>, pH 7.5

Normally 5 % - 8 % trehalose, mannitol and 0.01% Tween80 are added as protectants before lyophilization. Specific concentrations are included in the hardcopy of COA. Please contact us for any concerns or special requirements.

## Usage Guide

### Storage:

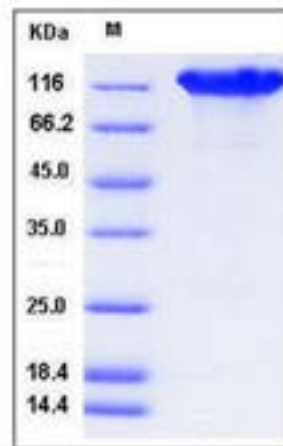
Store it under sterile conditions at -20°C to -80°C upon receiving. Recommend to aliquot the protein into smaller quantities for optimal storage.

**Avoid repeated freeze-thaw cycles.**

### Reconstitution:

Detailed reconstitution instructions are sent along with the products.

## SDS-PAGE:



## Protein Description

Angiotensin-converting enzyme 2 (ACE2), a first homolog of ACE, regulates the renin angiotensin system (RAS) by counterbalancing ACE activity. Accumulating evidence in recent years has demonstrated a physiological and pathological role of ACE2 in the cardiovascular, renal and respiratory systems. ACE2 also has an important role in blood pressure control. This enzyme, an homolog of ACE, hydrolyzes angiotensin (Ang) I to produce Ang-(1-9), which is subsequently converted into Ang-(1-7) by a neutral endopeptidase and ACE. ACE2 releases Ang-(1-7) more efficiently than its catalysis of Ang-(1-9) by cleavage of Pro(7)-Phe(8) bound in Ang II. Thus, the major biologically active product of ACE2 is Ang-(1-7), which is considered to be a beneficial peptide of the RAS cascade in the cardiovascular system. A physiological role for ACE2 has been implicated in hypertension, cardiac function, heart function and diabetes, and as a receptor of the severe acute respiratory syndrome coronavirus. In the acute respiratory distress syndrome (ARDS), ACE, AngII, and AT1R promote the disease pathogenesis, whereas ACE2 and the AT2R protect from ARDS. Importantly, ACE2 has been identified as a key SARS-coronavirus receptor and plays a protective role in severe acute respiratory syndrome (SARS) pathogenesis. Furthermore, the recent explosion of research into the ACE2 homolog, collectrin, has revealed a new physiological function of ACE2 as an amino acid transporter, which explains the pathogenic role of gene mutations in Hartnup disorder. This review summarizes and discusses the recently unveiled roles for ACE2 in disease pathogenesis.

## References

1. Koitka A, *et al.* (2008) Angiotensin converting enzyme 2 in the kidney. *Clin Exp Pharmacol Physiol.* 35(4): 420-5.
2. Raizada MK, *et al.* (2007) ACE2: a new target for cardiovascular disease therapeutics. *J Cardiovasc Pharmacol.* 50(2): 112-9.
3. Imai Y, *et al.* (2007) Angiotensin-converting enzyme 2 (ACE2) in disease pathogenesis. *Circ J.* 74(3): 405-10.

Manufactured By Sino Biological Inc., FOR RESEARCH USE ONLY. NOT FOR USE IN HUMANS.

For US Customer: Fax: 267-657-0217 • Tel: 215-583-7898

Global Customer: Fax :+86-10-5862-8288 • Tel:+86-400-890-9989 • <http://www.sinobiological.com>