

# VCAM1 Antibody (FITC), Rabbit MAb



Sino Biological  
Biological Solution Specialist

Catalog Number: 50163-R049-F

EliteRmab® is a registered trademark of Sino Biological Inc.

## GENERAL INFORMATION

<b>Immunogen:</b>	Recombinant Mouse VCAM1 Protein (Catalog#50163-M08H)
<b>Reagents:</b>	FITC-conjugated Rabbit monoclonal antibody
<b>Preparation</b>	This antibody was obtained from a rabbit immunized with purified, recombinant Mouse VCAM1 (rM VCAM1; Catalog#50163-M08H; NP_035823.3; Met1-Glu698) and conjugated with FITC under optimum conditions, the unreacted FITC was removed.
<b>Ig Type:</b>	Rabbit IgG
<b>Clone ID:</b>	049
<b>Specificity:</b>	Mouse VCAM1
<b>Concentration:</b>	5 µl/Test, 0.1 mg/ml
<b>Formulation:</b>	Aqueous solution containing 0.5% BSA and 0.03%ProClin300
<b>Storage:</b>	This antibody can be stored at 2℃-8℃ for twelve months without detectable loss of activity. Protected from prolonged exposure to light. Do not freeze !

## APPLICATIONS

<b>Applications:</b>	FCM
----------------------	-----

**Please Note: Optimal concentrations/dilutions should be determined by the end user.**

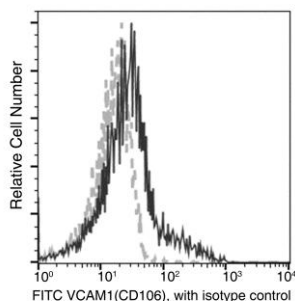
# VCAM1 Antibody (FITC), Rabbit MAb



Sino Biological  
Biological Solution Specialist

Catalog Number: 50163-R049-F

EliteRmab® is a registered trademark of Sino Biological Inc.



Flow cytometric analysis of Mouse VCAM1(CD106) expression on BABL/c bone marrow cells. Cells were stained with FITC-conjugated anti-Mouse VCAM1(CD106). The fluorescence histograms were derived from gated events with the forward and side light-scatter characteristics of intact cells.

Flow cytometry was performed on a BD FACSCalibur flow cytometry system. Please refer to [www.sinobiological.com/Flow-Cytometry-FACS-Protocols-a-750.html](http://www.sinobiological.com/Flow-Cytometry-FACS-Protocols-a-750.html) for technical protocols.