

# CD62L / L-Selectin / SELL Antibody (FITC), Rabbit MAb



Sino Biological  
Biological Solution Specialist

Catalog Number: 50045-R414-F

EliteRmab® is a registered trademark of Sino Biological Inc.

GENERAL INFORMATION	
Immunogen:	Recombinant Mouse SELL protein (Catalog#50045-M08H)
Reagents:	FITC-conjugated Rabbit monoclonal antibody
Preparation	This antibody was obtained from a rabbit immunized with purified, recombinant Mouse SELL / CD62L / L-selectin (rM SELL / CD62L / L-selectin; Catalog#50045-M08H; NP_035476.1; Met 1-Asn 332) and conjugated with FITC under optimum conditions, the unreacted FITC was removed.
Ig Type:	Rabbit IgG
Clone ID:	414
Specificity:	Mouse SELL / CD62L / L-selectin
Concentration:	5 µl/Test, 0.1 mg/ml
Formulation:	Aqueous solution containing 0.5% BSA and 0.09% sodium azide
Storage:	This antibody is stable for 12 months from date of receipt when stored at 2°C-8°C. Protected from prolonged exposure to light. Do not freeze! Sodium azide is toxic to cells and should be disposed of properly. Flush with large volumes of water during disposal.
APPLICATIONS	
Applications:	FCM
RECOMMENDED CONCENTRATION	

**Please Note: Optimal concentrations/dilutions should be determined by the end user.**

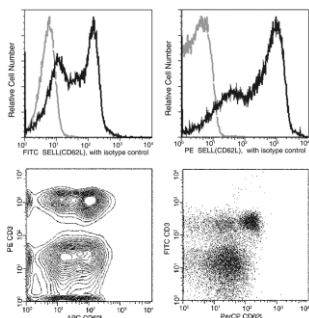
# CD62L / L-Selectin / SELL Antibody (FITC), Rabbit MAb

Catalog Number: 50045-R414-F



Sino Biological  
Biological Solution Specialist

EliteRmab® is a registered trademark of Sino Biological Inc.



Flow cytometric analysis of CD62L expression on spleen lymphocytes. BALB/c splenocytes were treated with Mouse BD Fc Block™ purified anti-CD16/CD32 mAb 2.4G2 (Cat. No. 553141) and stained with FITC-conjugated anti-Mouse CD62L(50045-R414-F). The histogram were derived from the gated events based on light scattering characteristics of lymphocytes.

Flow cytometry was performed on a BD FACSCalibur flow cytometry system. Please refer to [www.sinobiological.com/Flow-Cytometry-FACS-Protocols-a-750.html](http://www.sinobiological.com/Flow-Cytometry-FACS-Protocols-a-750.html) for technical protocols.