

# Plasmodium falciparum (strain 3D7) LDH / L-lactate dehydrogenase Protein (His Tag)

Catalog Number: 40303-N08E



Sino Biological  
Biological Solution Specialist

## General Information

### Gene Name Synonym:

L-lactate dehydrogenase; PfLDH

### Protein Construction:

A DNA sequence encoding the PfLDH (XP\_001349989.1) (Met1-Ala316) was expressed with a polyhistidine tag at the C-terminus.

**Source:** P. falciparum

**Expression Host:** E. coli

## QC Testing

**Purity:** > (28.0 + 67.9) % as determined by SDS-PAGE.

### Endotoxin:

Please contact us for more information.

### Stability:

Samples are stable for up to twelve months from date of receipt at -70 °C

**Predicted N terminal:** Met

### Molecular Mass:

The recombinant PfLDH consists 322 amino acids and predicts a molecular mass of 34.9 kDa.

### Formulation:

Lyophilized from sterile PBS, pH 7.4.

Normally 5 % - 8 % trehalose, mannitol and 0.01% Tween80 are added as protectants before lyophilization. Specific concentrations are included in the hardcopy of COA. Please contact us for any concerns or special requirements.

## Usage Guide

### Storage:

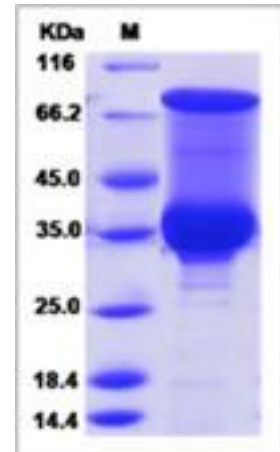
Store it under sterile conditions at -20°C to -80°C upon receiving. Recommend to aliquot the protein into smaller quantities for optimal storage.

**Avoid repeated freeze-thaw cycles.**

### Reconstitution:

Detailed reconstitution instructions are sent along with the products.

## SDS-PAGE:



Manufactured By Sino Biological Inc., FOR RESEARCH USE ONLY. NOT FOR USE IN HUMANS.

For US Customer: Fax: 267-657-0217 • Tel: 215-583-7898

Global Customer: Fax :+86-10-5862-8288 • Tel:+86-400-890-9989 • <http://www.sinobiological.com>