

PSGL-1 / CD162 Antibody (FITC), Rabbit MAb



Sino Biological
Biological Solution Specialist

Catalog Number: 13863-R031-F

EliteRmab® is a registered trademark of Sino Biological Inc.

GENERAL INFORMATION	
Immunogen:	Recombinant Human PSGL-1 / CD162 Protein (Catalog#13863-H08H)
Reagents:	FITC-conjugated Rabbit monoclonal antibody
Preparation	This antibody was obtained from a rabbit immunized with purified, recombinant Human PSGL-1 / CD162 (rh PSGL-1 / CD162; Catalog#13863-H08H; Q14242; Met1-Gly295) and conjugated with FITC under optimum conditions, the unreacted FITC was removed.
Ig Type:	Rabbit IgG
Clone ID:	031
Specificity:	Human PSGL-1 / CD162
Concentration:	10 µl/Test, 0.1 mg/ml
Formulation:	Aqueous solution containing 0.5% BSA and 0.09% sodium azide
Storage:	This antibody can be stored at 2℃-8℃ for twelve months without detectable loss of activity. Protected from prolonged exposure to light. Do not freeze ! Sodium azide is toxic to cells and should be disposed of properly. Flush with large volumes of water during disposal.
Alternative Names:	CD162,CLA,PSGL-1,PSGL1
APPLICATIONS	
Applications:	FCM

Please Note: Optimal concentrations/dilutions should be determined by the end user.

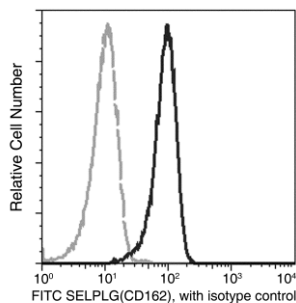
PSGL-1 / CD162 Antibody (FITC), Rabbit MAb

Catalog Number: 13863-R031-F



Sino Biological
Biological Solution Specialist

EliteRmab® is a registered trademark of Sino Biological Inc.



Flow cytometric analysis of Human SELPLG(CD162) expression on human whole blood granulocytes. Cells were stained with FITC-conjugated anti-Human SELPLG(CD162). The fluorescence histograms were derived from gated events with the forward and side light-scatter characteristics of viable granulocytes.

Flow cytometry was performed on a BD FACSCalibur flow cytometry system. Please refer to www.sinobiological.com/Flow-Cytometry-FACS-Protocols-a-750.html for technical protocols.