

# Human B7-H5 / Gi24 / VISTA Protein (His Tag)



Sino Biological  
Biological Solution Specialist

Catalog Number: 13482-H08H

## General Information

### Gene Name Synonym:

B7-H5; B7H5; C10orf54; DD1alpha; GI24; PD-1H; PP2135; SISP1; VISTA

### Protein Construction:

A DNA sequence encoding the human Gi24 (AAH20568.1) (Met1-Ala194) was expressed with a polyhistidine tag at the C-terminus.

**Source:** Human

**Expression Host:** HEK293 Cells

## QC Testing

**Purity:** > 95 % as determined by SDS-PAGE

### Endotoxin:

< 1.0 EU per µg of the protein as determined by the LAL method

### Stability:

Samples are stable for up to twelve months from date of receipt at -70 °C

**Predicted N terminal:** Phe 33

### Molecular Mass:

The recombinant human Gi24 consists of 173 amino acids and predicts a molecular mass of 19.6 KDa. It migrates as an approximately 38-42 KDa band in SDS-PAGE under reducing conditions.

### Formulation:

Lyophilized from sterile PBS, pH 7.4

Normally 5 % - 8 % trehalose, mannitol and 0.01% Tween80 are added as protectants before lyophilization. Specific concentrations are included in the hardcopy of COA. Please contact us for any concerns or special requirements.

## Usage Guide

### Storage:

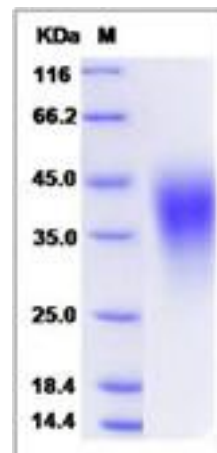
Store it under sterile conditions at -20°C to -80°C upon receiving. Recommend to aliquot the protein into smaller quantities for optimal storage.

**Avoid repeated freeze-thaw cycles.**

### Reconstitution:

Detailed reconstitution instructions are sent along with the products.

## SDS-PAGE:



Manufactured By Sino Biological Inc., FOR RESEARCH USE ONLY. NOT FOR USE IN HUMANS.

For US Customer: Fax: 267-657-0217 • Tel: 215-583-7898

Global Customer: Fax :+86-10-5862-8288 • Tel:+86-400-890-9989 • <http://www.sinobiological.com>