

LILRB3 Antibody (FITC), Mouse MAb



Sino Biological
Biological Solution Specialist

Catalog Number: 11978-MM08-F

GENERAL INFORMATION

Immunogen:	Recombinant Human LILRB3 Protein (Catalog#11978-H08H)
Reagents:	FITC-conjugated Mouse monoclonal antibody
Preparation	This antibody was produced from a hybridoma resulting from the fusion of a mouse myeloma with B cells obtained from a mouse immunized with purified, recombinant Human LILRB3 (rh LILRB3; Catalog#11978-H08H; NP_006855.2; Met 1-Glu 443) and conjugated with FITC under optimum conditions, the unreacted FITC was removed.
Ig Type:	Mouse IgG1
Clone ID:	08
Specificity:	Human LILRB3
Concentration:	10 µl/Test, 0.1 mg/ml
Formulation:	Aqueous solution containing 0.5% BSA and 0.09% sodium azide
Storage:	This antibody can be stored at 2°C-8°C for twelve months without detectable loss of activity. Protected from prolonged exposure to light. Do not freeze ! Sodium azide is toxic to cells and should be disposed of properly. Flush with large volumes of water during disposal.
Alternative Names:	CD85A,HL9,ILT-5,ILT5,LILRA6,LIR-3,LIR3,MGC138403,PIRB,XXbac-BCX105G6.7

APPLICATIONS

Applications:	FCM
----------------------	-----

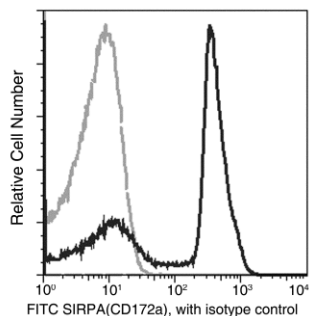
Please Note: Optimal concentrations/dilutions should be determined by the end user.

LILRB3 Antibody (FITC), Mouse MAb



Sino Biological
Biological Solution Specialist

Catalog Number: 11978-MM08-F



Flow cytometric analysis of Mouse SIRPA(CD172a) expression on BABL/c bone marrow cells. Cells were stained with FITC-conjugated anti-Mouse SIRPA(CD172a). The fluorescence histograms were derived from gated events with the forward and side light-scatter characteristics of intact cells.

Flow cytometry was performed on a BD FACSCalibur flow cytometry system. Please refer to www.sinobiological.com/Flow-Cytometry-FACS-Protocols-a-750.html for technical protocols.