

CD8/CD8 alpha/Leu-2 Antibody (APC), Mouse MAb



Sino Biological
Biological Solution Specialist

Catalog Number: 10980-MM28-A

GENERAL INFORMATION

Immunogen:	Recombinant Human CD8/CD8 alpha/Leu-2 Protein (Catalog#10980-H08H)
Reagents:	APC-conjugated Mouse monoclonal antibody
Preparation	This antibody was produced from a hybridoma resulting from the fusion of a mouse myeloma with B cells obtained from a mouse immunized with purified, recombinant Human CD8/CD8 alpha/Leu-2 (rh CD8/CD8 alpha/Leu-2; Catalog#10980-H08H; NP_001759.3; Met1-Asp182) and conjugated with APC under optimum conditions, the unreacted APC was removed.
Ig Type:	Mouse IgG2b
Clone ID:	28
Specificity:	Human CD8/CD8 alpha/Leu-2
Concentration:	5 µl/Test, 0.1 mg/ml
Formulation:	Aqueous solution containing 0.5% BSA and 0.09% sodium azide
Storage:	This antibody is stable for 12 months from date of receipt when stored at 2°C-8°C. Protected from prolonged exposure to light. Do not freeze! Sodium azide is toxic to cells and should be disposed of properly. Flush with large volumes of water during disposal.

APPLICATIONS

Applications:	FCM
----------------------	-----

RECOMMENDED CONCENTRATION

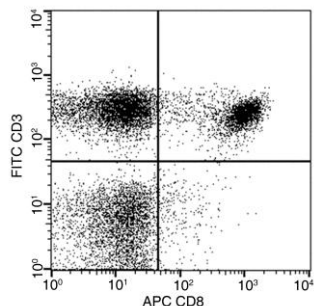
Please Note: Optimal concentrations/dilutions should be determined by the end user.

CD8/CD8 alpha/Leu-2 Antibody (APC), Mouse MAb



Sino Biological
Biological Solution Specialist

Catalog Number: 10980-MM28-A



Flow cytometric analysis of Human CD8 expression on human whole blood lymphocytes. Cells were stained with APC-conjugated anti-Human CD8 and FITC conjugated anti-Human CD3. The dot plots were derived from gated events with the forward and side light-scatter characteristics of viable lymphocytes.

Flow cytometry was performed on a BD FACSCalibur flow cytometry system. Please refer to www.sinobiological.com/Flow-Cytometry-FACS-Protocols-a-750.html for technical protocols.