

CD3e / CD3 epsilon Antibody (APC), Mouse MAb



Sino Biological
Biological Solution Specialist

Catalog Number: 10977-M001-A

GENERAL INFORMATION	
Immunogen:	Recombinant Human CD3e / CD3 epsilon protein (Catalog#10977-H08H)
Reagents:	APC-conjugated Mouse monoclonal antibody
Preparation	This antibody was produced from a hybridoma resulting from the fusion of a mouse myeloma with B cells obtained from a mouse immunized with purified, recombinant Human CD3e / CD3 epsilon (rh CD3e / CD3 epsilon; Catalog#10977-H08H; NP_000724.1; Met1-Asp126) and conjugated with APC under optimum conditions, the unreacted APC was removed.
Ig Type:	Mouse IgG2a
Clone ID:	001
Specificity:	Human CD3e / CD3 epsilon
Concentration:	1 µl/Test, 0.1 mg/ml
Formulation:	Aqueous solution containing 0.5% BSA and 0.09% sodium azide
Storage:	This antibody can be stored at 2°C-8°C for twelve months without detectable loss of activity. Protected from prolonged exposure to light. Do not freeze ! Sodium azide is toxic to cells and should be disposed of properly. Flush with large volumes of water during disposal.
Alternative Names:	CD3 epsilon,IMD18,T3E,TCRE
APPLICATIONS	
Applications:	FCM

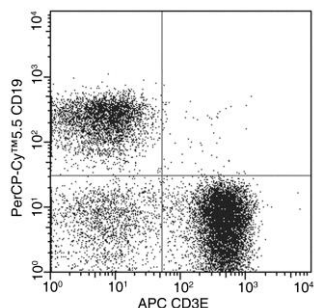
Please Note: Optimal concentrations/dilutions should be determined by the end user.

CD3e / CD3 epsilon Antibody (APC), Mouse MAb



Sino Biological
Biological Solution Specialist

Catalog Number: 10977-M001-A



Flow cytometric analysis of Human CD3 expression on human peripheral blood lymphocytes. Cells were stained with APC-conjugated anti-Human CD3 and PerCP-CyTM5.5 conjugated anti-Human CD19 (BD PharmingenTM Cat. No. 561295). The dot plots were derived from events with the forward and side light-scatter characteristics of viable lymphocytes.

Flow cytometry was performed on a BD FACSCalibur flow cytometry system. Please refer to www.sinobiological.com/Flow-Cytometry-FACS-Protocols-a-750.html for technical protocols.