

c-MET / HGFR Antibody (FITC), Rabbit MAb



Sino Biological
Biological Solution Specialist

Catalog Number: 10692-R271-F

EliteRmab® is a registered trademark of Sino Biological Inc.

GENERAL INFORMATION

Immunogen:	Recombinant Human HGFR / c-MET protein (Catalog#10692-H08H)
Reagents:	FITC-conjugated Rabbit monoclonal antibody
Preparation	This antibody was obtained from a rabbit immunized with purified, recombinant Human HGFR / c-MET (rh HGFR / c-MET; Catalog#10692-H08H; NP_000236.2; Met 1-Thr 932) and conjugated with FITC under optimum conditions, the unreacted FITC was removed.
Ig Type:	Rabbit IgG
Clone ID:	271
Specificity:	Human HGFR / c-MET
Concentration:	10 µl/Test, 0.1 mg/ml
Formulation:	PBS solution containing 0.5% BSA and 0.09% sodium azide
Storage:	This antibody can be stored at 2℃-8℃ for twelve months without detectable loss of activity. Protected from prolonged exposure to light. Do not freeze ! Sodium azide is toxic to cells and should be disposed of properly. Flush with large volumes of water during disposal.
Alternative Names:	MET

APPLICATIONS

Applications:	FCM
----------------------	-----

RECOMMENDED CONCENTRATION

Please Note: Optimal concentrations/dilutions should be determined by the end user.

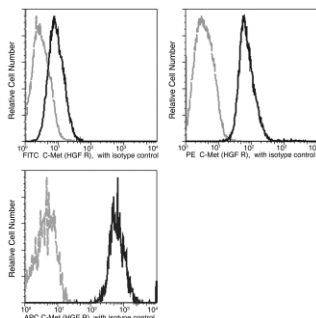
c-MET / HGFR Antibody (FITC), Rabbit MAb

Catalog Number: 10692-R271-F



Sino Biological
Biological Solution Specialist

EliteRmab® is a registered trademark of Sino Biological Inc.



Profile of anti-human C-Met (HGF R) reactivity on HepG2 cells analyzed by flow cytometry. The Clone R271 and R243 (Cat. No. 10692-R243-F) monoclonal antibodies are not cross-blocking.

Flow cytometry was performed on a BD FACSCalibur flow cytometry system. Please refer to www.sinobiological.com/Flow-Cytometry-FACS-Protocols-a-750.html for technical protocols.