

# c-MET / HGFR Antibody (APC), Rabbit MAb



Sino Biological  
Biological Solution Specialist

Catalog Number: 10692-R271-A

EliteRmab® is a registered trademark of Sino Biological Inc.

GENERAL INFORMATION	
Immunogen:	Recombinant Human HGFR / c-MET protein (Catalog#10692-H08H)
Reagents:	APC-conjugated Rabbit monoclonal antibody
Preparation	This antibody was obtained from a rabbit immunized with purified, recombinant Human HGFR / c-MET (rh HGFR / c-MET; Catalog#10692-H08H; NP_000236; Met 1-Thr 932) and conjugated with APC under optimum conditions, the unreacted APC was removed.
Ig Type:	Rabbit IgG
Clone ID:	271
Specificity:	Human HGFR / c-MET
Concentration:	10 µl/Test, 0.1 mg/ml
Formulation:	Aqueous solution containing 0.5% BSA and 0.09% sodium azide
Storage:	This antibody is stable for 12 months from date of receipt when stored at 2°C-8°C. Protected from prolonged exposure to light. Do not freeze! Sodium azide is toxic to cells and should be disposed of properly. Flush with large volumes of water during disposal.
APPLICATIONS	
Applications:	FCM
RECOMMENDED CONCENTRATION	

**Please Note: Optimal concentrations/dilutions should be determined by the end user.**

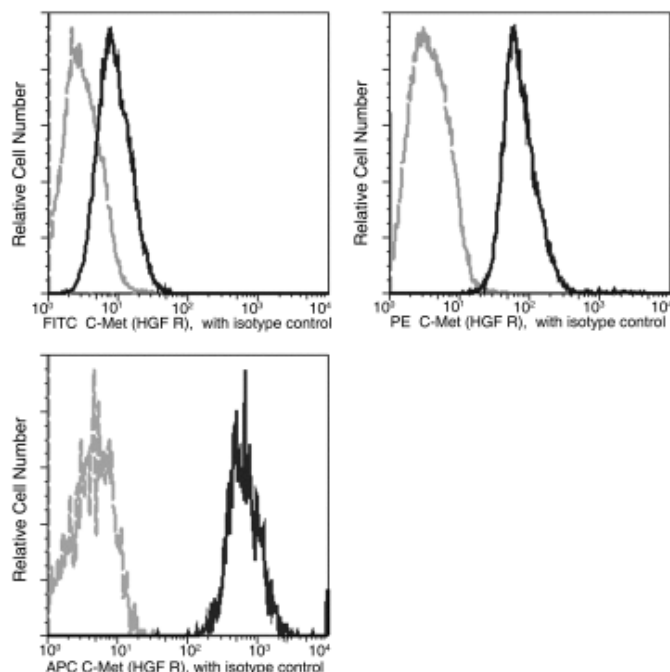
# c-MET / HGFR Antibody (APC), Rabbit MAb

Catalog Number: 10692-R271-A



Sino Biological  
Biological Solution Specialist

EliteRmab® is a registered trademark of Sino Biological Inc.



Profile of anti-human C-Met (HGF R) reactivity on HepG2 cells analyzed by flow cytometry. The Clone R271 and R243 (Cat. No. 10692-R243-F) monoclonal antibodies are not cross-blocking.

Flow cytometry was performed on a BD FACSCalibur flow cytometry system.

Please refer to [www.sinobiological.com/Flow-Cytometry-FACS-Protocols-a-750.html](http://www.sinobiological.com/Flow-Cytometry-FACS-Protocols-a-750.html) for technical protocols.