

PD-1/PDCD1 Antibody (FITC), Mouse MAb



Sino Biological
Biological Solution Specialist

Catalog Number: 10377-M140-F

GENERAL INFORMATION

| | |
|-----------------------|--|
| Immunogen: | Recombinant Human PD-1/PDCD1 Protein (Catalog#10377-H08H) |
| Reagents: | FITC-conjugated Mouse monoclonal antibody |
| Preparation | This antibody was produced from a hybridoma resulting from the fusion of a mouse myeloma with B cells obtained from a mouse immunized with purified, recombinant Human PD-1/PDCD1 (rh PD-1/PDCD1; Catalog#10377-H08H; NP_005009.2; Met1-Gln167) and conjugated with FITC under optimum conditions, the unreacted FITC was removed. |
| Ig Type: | Mouse IgG1 |
| Clone ID: | 140 |
| Specificity: | Human PD-1/PDCD1 |
| Concentration: | 10 µl/Test, 0.1 mg/ml |
| Formulation: | Aqueous solution containing 0.5% BSA and 0.03%ProClin300 |
| Storage: | This antibody can be stored at 2°C-8°C for twelve months without detectable loss of activity. Protected from prolonged exposure to light. Do not freeze ! |

APPLICATIONS

| | |
|----------------------|-----|
| Applications: | FCM |
|----------------------|-----|

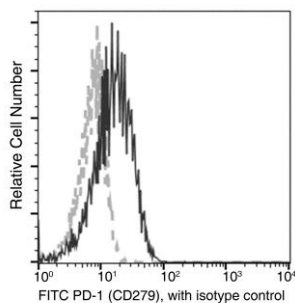
Please Note: Optimal concentrations/dilutions should be determined by the end user.

PD-1/PDCD1 Antibody (FITC), Mouse MAb



Sino Biological
Biological Solution Specialist

Catalog Number: 10377-M140-F



Flow cytometric analysis of Human PD-1 (CD279) expression on human whole blood Lymphocytes. Cells were stained with FITC-conjugated anti-Human PD-1 (CD279). The fluorescence histograms were derived from gated events with the forward and side light-scatter characteristics of viable Lymphocytes.

Flow cytometry was performed on a BD FACSCalibur flow cytometry system. Please refer to www.sinobiological.com/Flow-Cytometry-FACS-Protocols-a-750.html for technical protocols.