

CD147 / EMMPRIN / Basigin Antibody (FITC), Mouse MAb



Sino Biological
Biological Solution Specialist

Catalog Number: 10186-MM08-F

GENERAL INFORMATION	
Immunogen:	Recombinant Human CD147 protein (Catalog#10186-H08H)
Reagents:	FITC-conjugated Mouse monoclonal antibody
Preparation	This antibody was produced from a hybridoma resulting from the fusion of a mouse myeloma with B cells obtained from a mouse immunized with purified, recombinant Human CD147 / EMMPRIN / Basigin (rh CD147 / EMMPRIN / Basigin; Catalog#10186-H08H; NP_940991.1; Met 1-His 205) and conjugated with FITC under optimum conditions, the unreacted FITC was removed.
Ig Type:	Mouse IgG1
Clone ID:	08
Specificity:	Human CD147 / EMMPRIN / Basigin
Concentration:	10 µl/Test, 0.1 mg/ml
Formulation:	Aqueous solution containing 0.5% BSA and 0.09% sodium azide
Storage:	This antibody is stable for 12 months from date of receipt when stored at 2°C-8°C. Protected from prolonged exposure to light. Do not freeze! Sodium azide is toxic to cells and should be disposed of properly. Flush with large volumes of water during disposal.
APPLICATIONS	
Applications:	FCM, ICC/IF
RECOMMENDED CONCENTRATION	
ICC/IF	ICC/IF: 10-30 µg/mL

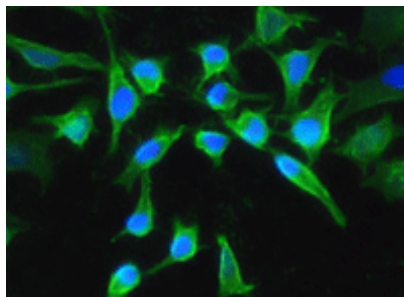
Please Note: Optimal concentrations/dilutions should be determined by the end user.

CD147 / EMMPRIN / Basigin Antibody (FITC), Mouse MAb

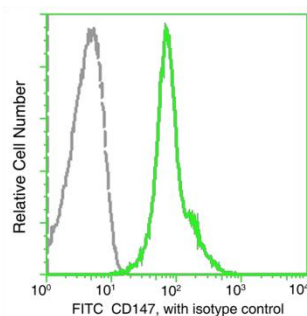


Sino Biological
Biological Solution Specialist

Catalog Number: 10186-MM08-F



Immunofluorescence staining of human CD147 in HeLa cells with mouse monoclonal antibody (15 $\mu\text{g/mL}$). The image showing membrane staining of HeLa cells. Primary antibody (FITC conjugated) was incubated for 1 hour at 37°C.



Profile of peripheral blood lymphocytes analyzed by flow cytometry. The fluorescence histograms were derived from events with the forward and side light-scatter characteristics of viable lymphocytes.

Flow cytometry was performed on a BD FACSCalibur flow cytometry system. Please refer to www.sinobiological.com/Flow-Cytometry-FACS-Protocols-a-750.html for technical protocols.