

CD146 / MCAM Antibody (PE), Rabbit MAb



Sino Biological
Biological Solution Specialist

Catalog Number: 10115-R044-P

EliteRmab® is a registered trademark of Sino Biological Inc.

GENERAL INFORMATION	
Immunogen:	Recombinant Human CD146 protein (Catalog#10115-H08H)
Reagents:	PE-conjugated Rabbit monoclonal antibody
Preparation	This antibody was obtained from a rabbit immunized with purified, recombinant Human CD146 / MCAM (rh CD146; Catalog#10115-H08H; NP_006491.2; Met 1-Gly 559) and conjugated with PE under optimum conditions, the unreacted PE was removed.
Ig Type:	Rabbit IgG
Clone ID:	044
Specificity:	Human CD146 / MCAM
Concentration:	2 µl/Test, 0.1 mg/ml
Formulation:	Aqueous solution containing 0.5% BSA and 0.1% sodium azide
Storage:	This antibody is stable for 12 months from date of receipt when stored at 2°C-8°C. Protected from prolonged exposure to light. Do not freeze! Sodium azide is toxic to cells and should be disposed of properly. Flush with large volumes of water during disposal.
APPLICATIONS	
Applications:	FCM, ICC/IF
RECOMMENDED CONCENTRATION	
ICC/IF	ICC/IF: 5-20 µg/mL

Please Note: Optimal concentrations/dilutions should be determined by the end user.

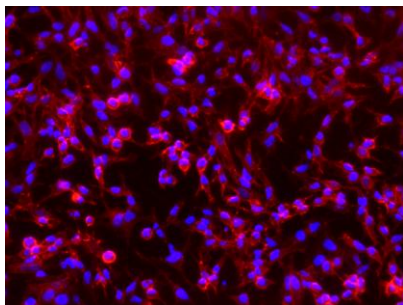
CD146 / MCAM Antibody (PE), Rabbit MAb

Catalog Number: 10115-R044-P

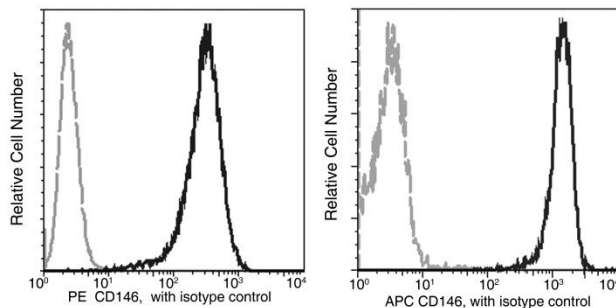


Sino Biological
Biological Solution Specialist

EliteRmab® is a registered trademark of Sino Biological Inc.



Immunofluorescence staining of Human CD146 in HeLa cells. Cells were fixed with 4% PFA, blocked with 10% serum, and incubated with Rabbit anti-Human CD146 monoclonal antibody (PE-conjugated, 10 µg/ml) at 4°C overnight, and counterstained with DAPI (blue). Positive staining was localized to plasma membrane.



Profile of anti-CD146 reactivity on HeLa cells analyzed by flow cytometry.

Flow cytometry was performed on a BD FACSCalibur flow cytometry system. Please refer to www.sinobiological.com/Flow-Cytometry-FACS-Protocols-a-750.html for technical protocols.