

# IL-8/Interleukin-8/CXCL8 Antibody, Rabbit PAb, Antigen Affinity Purified



Sino Biological  
Biological Solution Specialist

Catalog Number: 10098-T36

## GENERAL INFORMATION

<b>Immunogen:</b>	Recombinant Human IL-8/Interleukin-8/CXCL8 Protein (Catalog#10098-HNCH1)
<b>Preparation</b>	Produced in rabbits immunized with purified, recombinant Human IL-8/Interleukin-8/CXCL8 (rh IL-8/Interleukin-8/CXCL8; Catalog#10098-HNCH1; NP_000575.1; Ala23-Ser99). IL-8/Interleukin-8/CXCL8 specific IgG was purified by Human IL-8/Interleukin-8/CXCL8 affinity chromatography.
<b>Ig Type:</b>	Rabbit IgG
<b>Specificity:</b>	Human IL-8/Interleukin-8/CXCL8
<b>Formulation:</b>	0.2 µm filtered solution in PBS
<b>Storage:</b>	This antibody can be stored at 2°C-8°C for one month without detectable loss of activity. Antibody products are stable for twelve months from date of receipt when stored at -20°C to -80°C. Preservative-Free. Sodium azide is recommended to avoid contamination (final concentration 0.05%-0.1%). It is toxic to cells and should be disposed of properly. Avoid repeated freeze-thaw cycles.

## APPLICATIONS

<b>Applications:</b>	WB,IP
----------------------	-------

## RECOMMENDED CONCENTRATION

<b>Western Blot</b>	WB: 1:500-1:1000
<b>Immunoprecipitation</b>	IP: 0.2-1 µL/mg of lysate

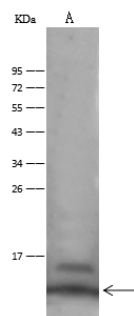
**Please Note:** Optimal concentrations/dilutions should be determined by the end user.

# IL-8/Interleukin-8/CXCL8 Antibody, Rabbit PAb, Antigen Affinity Purified



Sino Biological  
Biological Solution Specialist

Catalog Number: 10098-T36

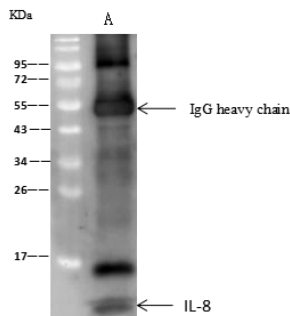


Anti-IL-8 rabbit polyclonal antibody at 1:500 dilution  
Lane A: HeLa Whole Cell Lysate

Lysates/proteins at 30 µg per lane.  
Secondary  
Goat Anti-Rabbit IgG (H+L)/HRP at 1/10000 dilution.

Developed using the ECL technique.  
Performed under reducing conditions.

Predicted band size: 11 kDa  
Observed band size: 11 kDa



IL-8 was immunoprecipitated using:  
Lane A: 0.5 mg HeLa Whole Cell Lysate

0.5 µL anti-IL-8 rabbit polyclonal antibody and  
60 µg of Immunomagnetic beads Protein A/G.

Primary antibody:  
Anti-IL-8 rabbit polyclonal antibody, at 1:500 dilution

Secondary antibody:  
Goat Anti-Rabbit IgG (H+L)/HRP at 1/10000 dilution

Developed using the technique.  
Performed under reducing conditions.

Predicted band size: 11 kDa  
Observed band size: 11 kDa