

SYP Antibody, Rabbit PAb, Antigen Affinity Purified



Sino Biological
Biological Solution Specialist

Catalog Number: 100298-T34

GENERAL INFORMATION

Immunogen:	A synthetic peptide corresponding to the C-terminus of the Human SYP
Preparation	Produced in rabbits immunized with a synthetic peptide corresponding to the C-terminus of the Human SYP, and purified by antigen affinity chromatography.
Ig Type:	Rabbit IgG
Specificity:	Human Mouse, Rat (Species predicted to react based on 100% sequence homology)
Formulation:	0.2 µm filtered solution in PBS
Storage:	This antibody can be stored at 2°C-8°C for one month without detectable loss of activity. Antibody products are stable for twelve months from date of receipt when stored at -20°C to -80°C. Preservative-Free. Avoid repeated freeze-thaw cycles.
Alternative Names:	MRX96,MRXSYP

APPLICATIONS

Applications:	WB, ICC/IF
----------------------	------------

RECOMMENDED CONCENTRATION

ICC/IF	ICC/IF: 1:300-1:10000
Western Blot	WB: 1:500-1:2000

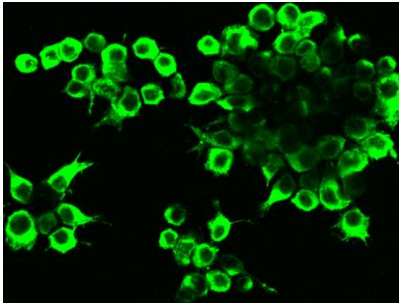
Please Note: Optimal concentrations/dilutions should be determined by the end user.

SYN Antibody, Rabbit PAb, Antigen Affinity Purified

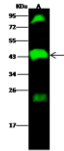


Sino Biological
Biological Solution Specialist

Catalog Number: 100298-T34



Immunofluorescence staining of SYN in PC12 cells. Cells were fixed with 4% PFA, permeabilized with 0.1% Triton X-100 in PBS, blocked with 10% serum, and incubated with rabbit anti-Human SYN polyclonal antibody (dilution ratio 1:1000) at 4°C overnight. Then cells were stained with the Alexa Fluor 488-conjugated Goat Anti-rabbit IgG secondary antibody (green). Positive staining was localized to cytoplasm.



Lanes	A
Items	
Sample (whole cell lysate)	PC12
Sample Volume (μg/lane)	30
Gel	10% SDS-PAGE reducing gel
Recommended Concentration	1-5 μg/ml
Secondary Antibody	Dylight 800 labeled Anti-rabbit IgG (H+L) at 1:5000 dilution
Developed using Odyssey imaging system	
Explanation	Predicted band size: 34 kDa Observed band size: 43 kDa Additional bands at: 24 kDa and 91 kDa (We are unsure as to the identity of these extra bands.)

Anti-SYN rabbit polyclonal antibody at 1:500 dilution

Lane A: PC12 Whole Cell Lysate

Lysates/proteins at 30 μg per lane.

Secondary
Goat Anti- Rabbit IgG H&L (Dylight 800) at 1/10000 dilution.

Developed using the Odyssey technique.
Performed under reducing conditions.

Predicted band size: 34 kDa
Observed band size: 43 kDa
(We are unsure as to the identity of these extra bands.)