

Vimentin Antibody, Rabbit MAb



Sino Biological
Biological Solution Specialist

Catalog Number: 100254-R211

EliteRmab® is a registered trademark of Sino Biological Inc.

| GENERAL INFORMATION | |
|---------------------------|---|
| Immunogen: | A synthetic peptide corresponding to the center region of the Human Vimentin |
| Preparation | This antibody was obtained from a rabbit immunized with a synthetic peptide corresponding to the center region of the Human Vimentin. The IgG fraction of the cell culture supernatant was purified by Protein A affinity chromatography. |
| Ig Type: | Rabbit IgG |
| Clone ID: | 211 |
| Specificity: | Human Vimentin |
| Formulation: | 0.2 µm filtered solution in PBS |
| Storage: | This antibody can be stored at 2°C-8°C for one month without detectable loss of activity. Antibody products are stable for twelve months from date of receipt when stored at -20°C to -80°C. Preservative-Free. Sodium azide is recommended to avoid contamination (final concentration 0.05%-0.1%). It is toxic to cells and should be disposed of properly. Avoid repeated freeze-thaw cycles. |
| APPLICATIONS | |
| Applications: | IHC-P |
| RECOMMENDED CONCENTRATION | |
| IHC-P | IHC-P: 1:250-1:1000 |

Please Note: Optimal concentrations/dilutions should be determined by the end user.

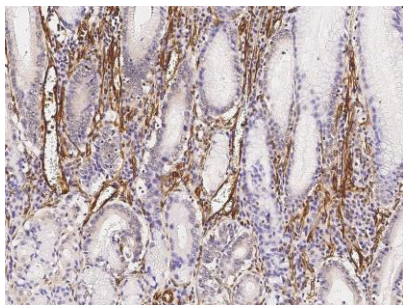
Vimentin Antibody, Rabbit MAb



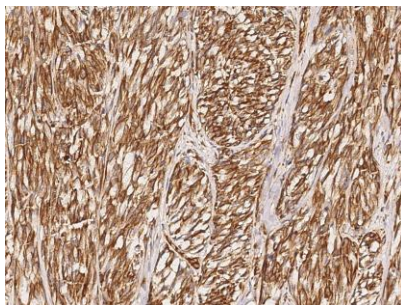
Sino Biological
Biological Solution Specialist

Catalog Number: 100254-R211

EliteRmab® is a registered trademark of Sino Biological Inc.



Immunohistochemical staining of human Vimentin in human stomach with rabbit monoclonal antibody (1:500, formalin-fixed paraffin embedded sections).



Immunohistochemical staining of human Vimentin in human malignant melanoma with rabbit monoclonal antibody (1:500, formalin-fixed paraffin embedded sections).