

Human PD-1/PDCD1 Protein



Cat. No. PD1-HM301

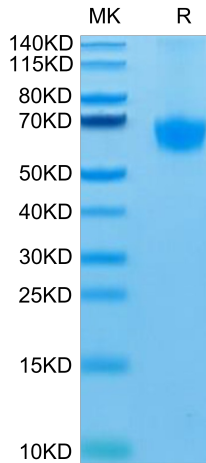
Description	
Source	Recombinant Human PD-1/PDCD1 Protein is expressed from HEK293 with mFc (IgG1) tag at the C-Terminus. It contains Leu25-Gln167.
Accession	Q15116-1
Molecular Weight	The protein has a predicted MW of 41.6 kDa. Due to glycosylation, the protein migrates to 64-68 kDa based on Tris-Bis PAGE result.
Endotoxin	Less than 1EU per µg by the LAL method.
Purity	> 95% as determined by Tris-Bis PAGE > 95% as determined by HPLC

Formulation and Storage	
Formulation	Lyophilized from 0.22µm filtered solution in PBS (pH 7.4). Normally 8% trehalose is added as protectant before lyophilization.
Reconstitution	Centrifuge the tube before opening. Reconstituting to a concentration more than 100 µg/ml is recommended. Dissolve the lyophilized protein in distilled water.
Storage	-20 to -80°C for 12 months as supplied from date of receipt. -20 to -80°C for 3-6 months in unopened state after reconstitution. 2-8°C for 2-7 days after reconstitution. Recommend to aliquot the protein into smaller quantities for optimal storage. Please minimize freeze-thaw cycles.

Background	
	Programmed Death-1 receptor (PD-1), also known as CD279, is type I transmembrane protein belonging to the CD28 family of immune regulatory receptors. PD1 is a inhibitory receptor on antigen activated T-cells that plays a critical role in induction and maintenance of immune tolerance to self. Delivers inhibitory signals upon binding to ligands CD274/PDCD1L1 and CD273/PDCD1LG2 (PubMed:21276005). Following T-cell receptor (TCR) engagement, PDCD1 associates with CD3-TCR in the immunological synapse and directly inhibits T-cell activation.

Assay Data

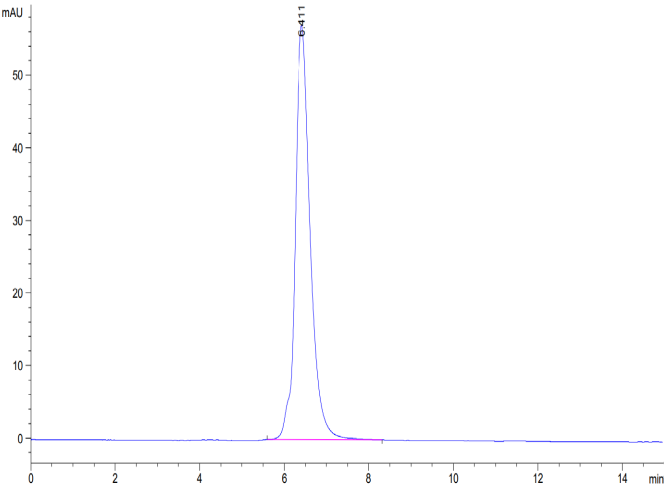
Tris-Bis PAGE



Human PD-1 on Tris-Bis PAGE under reduced condition. The purity is greater than 95%.

SEC-HPLC

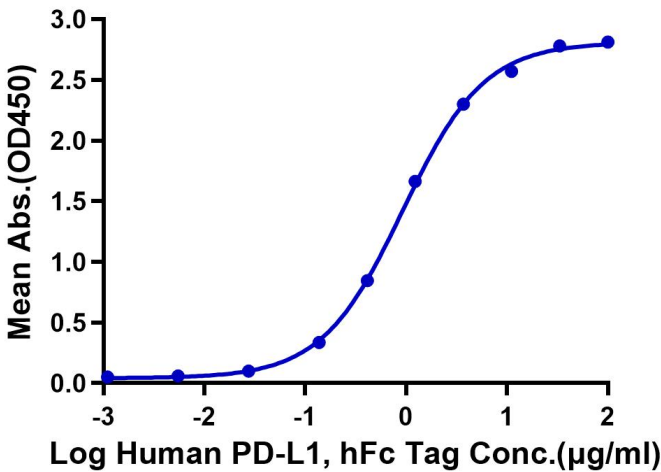
Assay Data



The purity of Human PD-1 is greater than 95% as determined by SEC-HPLC.

ELISA Data

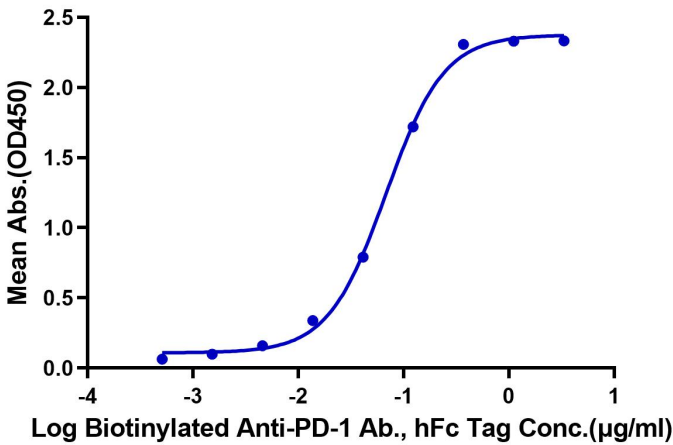
Human PD-1, mFc Tag ELISA
0.05µg Human PD-1, mFc Tag Per Well



Immobilized Human PD-1, mFc Tag at 0.5µg/ml (100µl/well) on the plate. Dose response curve for Human PD-L1, hFc Tag with the EC50 of 0.93µg/ml determined by ELISA (QC Test).

ELISA Data

Human PD-1, mFc Tag ELISA
0.05µg Human PD-1, mFc Tag Per Well



Immobilized Human PD-1, mFc Tag at 0.5µg/ml (100µl/Well). Dose response curve for Biotinylated Anti-PD-1 Ab., hFc Tag with the EC50 of 68ng/ml determined by ELISA.