

Mouse CD10/MME Protein

Cat. No. MME-MM110



Description

Source	Recombinant Mouse CD10/MME Protein is expressed from HEK293 with His tag at the N-Terminus.
	It contains Tyr52-Trp750.
Accession	Q61391
Molecular Weight	The protein has a predicted MW of 81.1 kDa. Due to glycosylation, the protein migrates to 82-110 kDa based on Tris-Bis PAGE result.
Endotoxin	Less than 1EU per µg by the LAL method.
Purity	> 95% as determined by Tris-Bis PAGE
	> 95% as determined by HPLC

Formulation and Storage

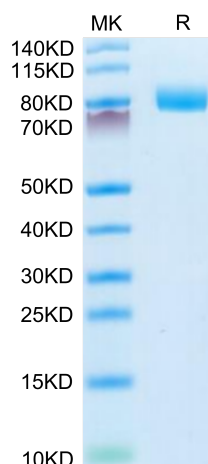
Formulation	Lyophilized from 0.22µm filtered solution in PBS (pH 7.4). Normally 8% trehalose is added as protectant before lyophilization.
Reconstitution	Centrifuge the tube before opening. Reconstituting to a concentration more than 100 µg/ml is recommended. Dissolve the lyophilized protein in distilled water.
Storage	-20 to -80°C for 12 months as supplied from date of receipt. -20 to -80°C for 3-6 months in unopened state after reconstitution. 2-8°C for 2-7 days after reconstitution. Recommend to aliquot the protein into smaller quantities for optimal storage. Please minimize freeze-thaw cycles.

Background

CD10 is an endopeptidase that degrades various bioactive peptides in the extracellular matrix. In addition to enzymatic degradation, it affects multiple intracellular signal transduction pathways. CD10 expression has been extensively studied in human epithelial cancers of numerous organs and sites. CD10 expression pattern depended on the histotypes of thyroid lesions. When possible metastatic tumours and non-epithelial tumours are excluded, high CD10 expression may be useful in determining whether a primary thyroid carcinoma includes an anaplastic component.

Assay Data

Tris-Bis PAGE



Mouse CD10 on Tris-Bis PAGE under reduced condition. The purity is greater than 95%.

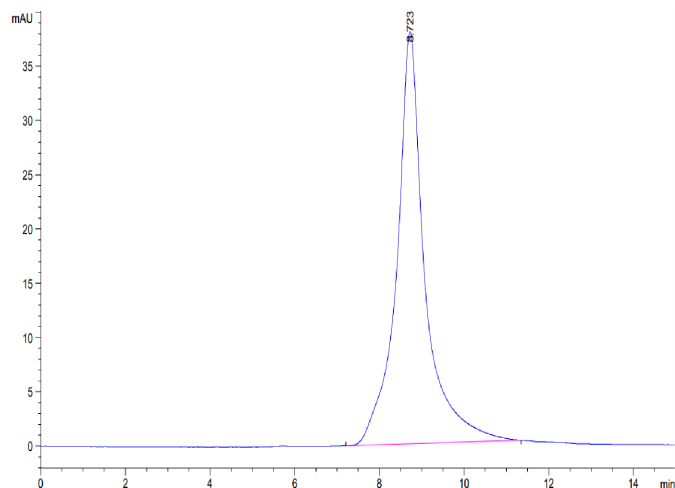
SEC-HPLC

Mouse CD10/MME Protein

Cat. No. MME-MM110



Assay Data



The purity of Mouse CD10 is greater than 95% as determined by SEC-HPLC.

Bioactivity Data

Measured by its ability to cleave the fluorogenic peptide substrate, Mca-RPPGFSAFK (Dnp) -OH. The specific activity is > 3000 pmoles/min/μg.