

# Human CD10/MME Protein

Cat. No. MME-HM110



## Description

Source	Recombinant Human CD10/MME Protein is expressed from HEK293 with His tag at the N-Terminus.
	It contains Tyr52-Trp750.
Accession	P08473
Molecular Weight	The protein has a predicted MW of 80.9 kDa. Due to glycosylation, the protein migrates to 81-110 kDa based on Tris-Bis PAGE result.
Endotoxin	Less than 1EU per µg by the LAL method.
Purity	> 95% as determined by Tris-Bis PAGE
	> 95% as determined by HPLC

## Formulation and Storage

Formulation	Lyophilized from 0.22µm filtered solution in 50mM MES, 100mM NaCl, 1mM ZnCl <sub>2</sub> , 10% Glycerol (pH 6.5). Normally 8% trehalose is added as protectant before lyophilization.
Reconstitution	Centrifuge the tube before opening. Reconstituting to a concentration more than 100 µg/ml is recommended. Dissolve the lyophilized protein in distilled water.
Storage	-20 to -80°C for 12 months as supplied from date of receipt. -20 to -80°C for 3-6 months in unopened state after reconstitution. 2-8°C for 2-7 days after reconstitution. Recommend to aliquot the protein into smaller quantities for optimal storage. Please minimize freeze-thaw cycles.

## Background

CD10 is an endopeptidase that degrades various bioactive peptides in the extracellular matrix. In addition to enzymatic degradation, it affects multiple intracellular signal transduction pathways. CD10 expression has been extensively studied in human epithelial cancers of numerous organs and sites. CD10 expression pattern depended on the histotypes of thyroid lesions. When possible metastatic tumours and non-epithelial tumours are excluded, high CD10 expression may be useful in determining whether a primary thyroid carcinoma includes an anaplastic component.

## Assay Data

### Tris-Bis PAGE



Human CD10/MME on Tris-Bis PAGE under reduced condition. The purity is greater than 95%.

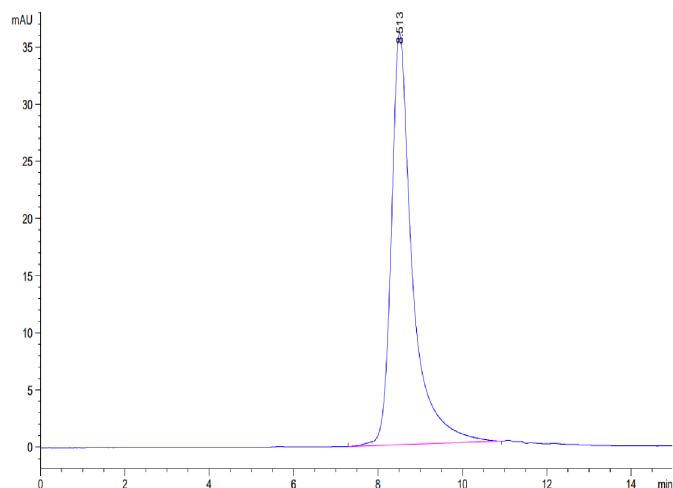
### SEC-HPLC

## Human CD10/MME Protein

Cat. No. MME-HM110



### Assay Data



The purity of Human CD10/MME is greater than 95% as determined by SEC-HPLC.

### Bioactivity Data

Measured by its ability to cleave the fluorogenic peptide substrate, Mca-RPPGFSAFK (Dnp) -OH. The specific activity is > 1500 pmoles/min/μg.