

Human LAG3/CD223 Protein



Cat. No. LAG-HM131

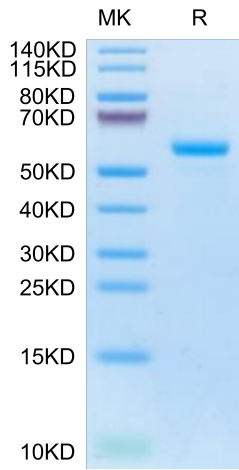
Description	
Source	Recombinant Human LAG3/CD223 Protein is expressed from HEK293 with His tag at the C-Terminus. It contains Leu23-Gly434.
Accession	P18627-1
Molecular Weight	The protein has a predicted MW of 45.5 kDa. Due to glycosylation, the protein migrates to 55-65 kDa based on Tris-Bis PAGE result.
Endotoxin	Less than 1EU per µg by the LAL method.
Purity	> 95% as determined by Tris-Bis PAGE > 95% as determined by HPLC

Formulation and Storage	
Formulation	Lyophilized from 0.22µm filtered solution in PBS (pH 7.4). Normally 8% trehalose is added as protectant before lyophilization.
Reconstitution	Centrifuge the tube before opening. Reconstituting to a concentration more than 100 µg/ml is recommended. Dissolve the lyophilized protein in distilled water.
Storage	-20 to -80°C for 12 months as supplied from date of receipt. -20 to -80°C for 3-6 months in unopened state after reconstitution. 2-8°C for 2-7 days after reconstitution. Recommend to aliquot the protein into smaller quantities for optimal storage. Please minimize freeze-thaw cycles.

Background	
LAG-3, is a protein which in humans is encoded by the LAG3 gene, which is a cell surface molecule with diverse biologic effects on T cell function. It is an immune checkpoint receptor and as such is the target of various drug development programs by pharmaceutical companies seeking to develop new treatments for cancer and autoimmune disorders.	

Assay Data

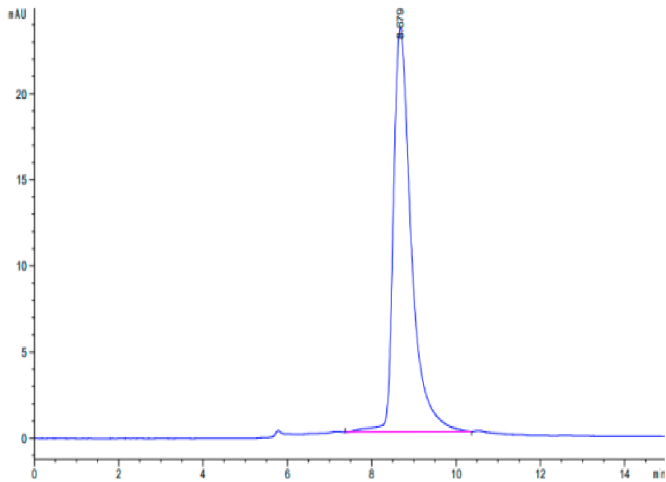
Tris-Bis PAGE



Human LAG3 on Tris-Bis PAGE under reduced condition. The purity is greater than 95%.

SEC-HPLC

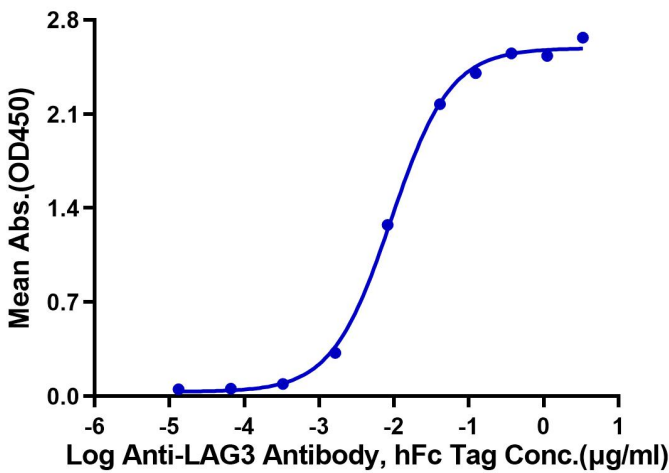
Assay Data



The purity of Human LAG3 is greater than 95% as determined by SEC-HPLC.

ELISA Data

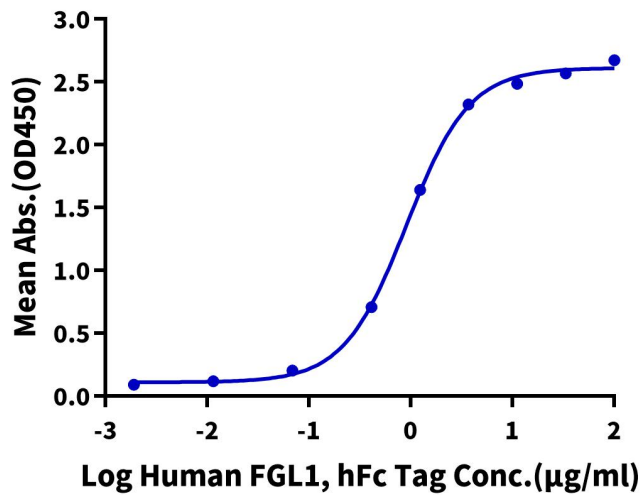
Human LAG3, His Tag ELISA
0.05µg Human LAG3, His Tag Per Well



Immobilized Human LAG3, His Tag at 0.5µg/ml (100µl/well) on the plate. Dose response curve for Anti-LAG3 Antibody, hFc Tag with the EC50 of 9.1ng/ml determined by ELISA (QC Test).

ELISA Data

Human LAG3, His Tag ELISA
0.2µg Human LAG3, His Tag Per Well



Immobilized Human LAG3, His Tag at 2µg/ml (100µl/Well) on the plate. Dose response curve for Human FGL1, hFc Tag with the EC50 of 0.91µg/ml determined by ELISA.