

Human CD27 Ligand/CD70 Protein

Cat. No. CD7-HM270



Description

Source	Recombinant Human CD27 Ligand/CD70 Protein is expressed from HEK293 with hFc at the N-Terminus.
	It contains Gln39-Pro193.
Accession	P32970-1
Molecular Weight	The protein has a predicted MW of 42.7 kDa. Due to glycosylation, the protein migrates to 60-80 kDa based on Tris-Bis PAGE result.
Endotoxin	Less than 1EU per µg by the LAL method.
Purity	> 95% as determined by Tris-Bis PAGE
	> 95% as determined by HPLC

Formulation and Storage

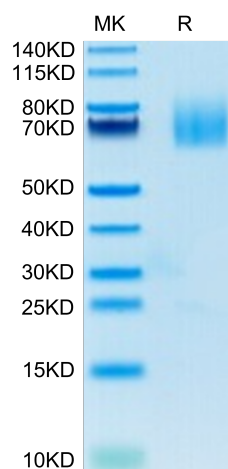
Formulation	Lyophilized from 0.22µm filtered solution in PBS (pH 7.4). Normally 8% trehalose is added as protectant before lyophilization.
Reconstitution	Centrifuge the tube before opening. Reconstituting to a concentration more than 100 µg/ml is recommended. Dissolve the lyophilized protein in distilled water.
Storage	-20 to -80°C for 12 months as supplied from date of receipt. -20 to -80°C for 3-6 months in unopened state after reconstitution. 2-8°C for 2-7 days after reconstitution. Recommend to aliquot the protein into smaller quantities for optimal storage. Please minimize freeze-thaw cycles.

Background

CD70, also named CD27 ligand (CD27L), is a type II transmembrane glycoprotein belonging to the TNF superfamily (TNFSF) and has been designated TNFSF7. CD70 is a cytokine that binds to CD27. Plays a role in T-cell activation. Induces the proliferation of costimulated T-cells and enhances the generation of cytolytic T-cells.

Assay Data

Tris-Bis PAGE



Human CD27 Ligand on Tris-Bis PAGE under reduced condition. The purity is greater than 95%.

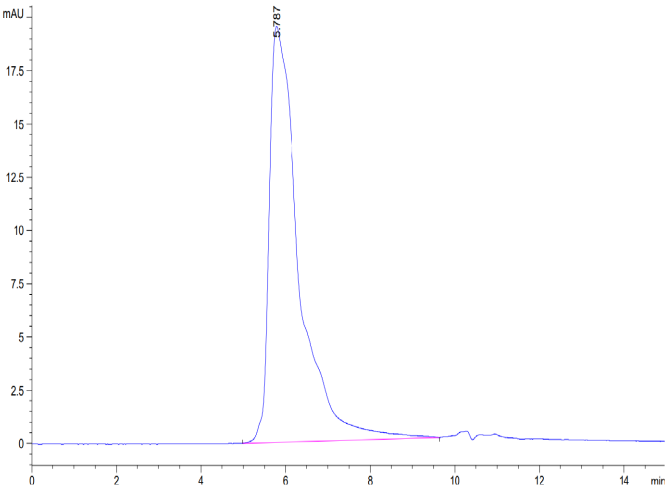
SEC-HPLC

Human CD27 Ligand/CD70 Protein

Cat. No. CD7-HM270



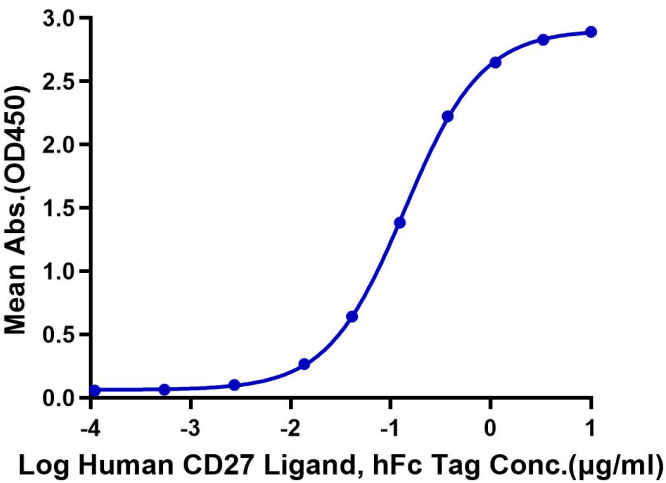
Assay Data



The purity of Human CD27 Ligand is greater than 95% as determined by SEC-HPLC.

ELISA Data

Human CD27 Ligand, hFc Tag ELISA
0.05µg Human CD27, His Tag Per Well



Immobilized Human CD27, His Tag at 0.5µg/ml (100µl/Well) on the plate. Dose response curve for Human CD27 Ligand, hFc Tag with the EC50 of 0.14µg/ml determined by ELISA.