

Cynomolgus BTLA Protein

Cat. No. BTL-CM101



Description

Source	Recombinant Cynomolgus BTLA Protein is expressed from HEK293 with His tag at the C-Terminus.
	It contains Lys31-Pro152.
Accession	A0A2K5W7M7
Molecular Weight	The protein has a predicted MW of 15.04 kDa. Due to glycosylation, the protein migrates to 35-40 kDa based on Tris-Bis PAGE result.
Endotoxin	Less than 1EU per µg by the LAL method.
Purity	> 95% as determined by Tris-Bis PAGE
	> 95% as determined by HPLC

Formulation and Storage

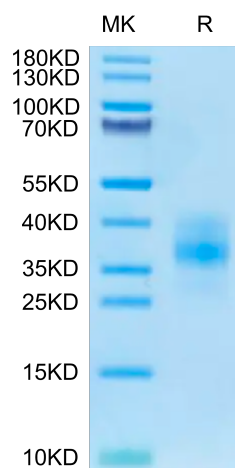
Formulation	Supplied as 0.22µm filtered solution in PBS (pH 7.4).
Storage	Valid for 12 months from date of receipt when stored at -80°C. Recommend to aliquot the protein into smaller quantities for optimal storage. Please minimize freeze-thaw cycles.

Background

B- and T-lymphocyte attenuator (BTLA; CD272) is a 35 kDa type I transmembrane glycoprotein in the CD28 family of T cell costimulatory molecules. BTLA is a inhibitory receptor on lymphocytes that negatively regulates antigen receptor signaling via PTPN6/SHP-1 and PTPN11/SHP-2. BTLA may interact in cis (on the same cell) or in trans (on other cells) with TNFRSF14.

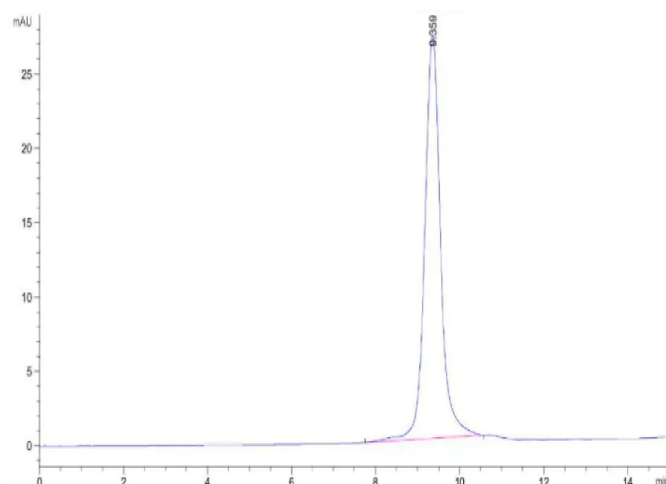
Assay Data

Tris-Bis PAGE



Cynomolgus BTLA on Tris-Bis PAGE under reduced condition. The purity is greater than 95%.

SEC-HPLC



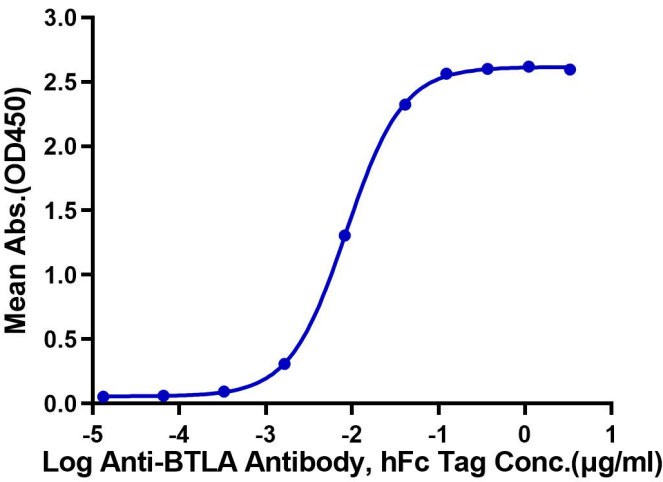
The purity of Cynomolgus BTLA is greater than 95% as determined by SEC-HPLC.

ELISA Data

Assay Data

Cynomolgus BTLA, His Tag ELISA

0.05µg Cynomolgus BTLA, His Tag Per Well



Immobilized Cynomolgus BTLA, His Tag at 0.5µg/ml (100µl/well) on the plate. Dose response curve for Anti-BTLA Antibody, hFc Tag with the EC50 of 8.6ng/ml determined by ELISA.