

Cynomolgus/Rhesus macaque B7-H5/Gi24/VISTA Protein

Cat. No. BH7-CM175

Description

Source	Recombinant Cynomolgus/Rhesus macaque B7-H5/Gi24/VISTA Protein is expressed from HEK293 with His tag at the C-Terminus.
	It contains Phe33-Thr192.
Accession	XP_005565644.2/F7F6S6
Molecular Weight	The protein has a predicted MW of 19.13 kDa. Due to glycosylation, the protein migrates to 40-60 kDa based on Tris-Bis PAGE result.
Endotoxin	Less than 1EU per µg by the LAL method.
Purity	> 95% as determined by Tris-Bis PAGE
	> 95% as determined by HPLC

Formulation and Storage

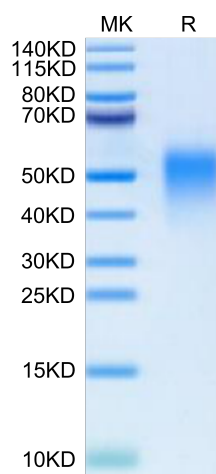
Formulation	Supplied as 0.22µm filtered solution in PBS (pH 7.4).
Storage	Valid for 12 months from date of receipt when stored at -80°C. Recommend to aliquot the protein into smaller quantities for optimal storage. Please minimize freeze-thaw cycles.

Background

B7-H5, also known as VISTA, B7H5, Dies1, SISP1 and C10orf54, is a 55-65 kDa member of the Ig superfamily. It is a transmembrane molecule expressed in bone, on embryonic stem cells (ESCs), and on tumor cell surfaces.

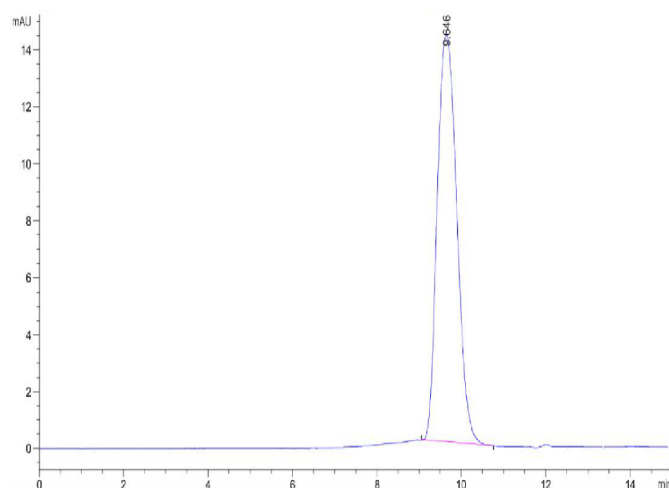
Assay Data

Tris-Bis PAGE



Cynomolgus/Rhesus macaque B7-H5 on Tris-Bis PAGE under reduced condition. The purity is greater than 95%.

SEC-HPLC

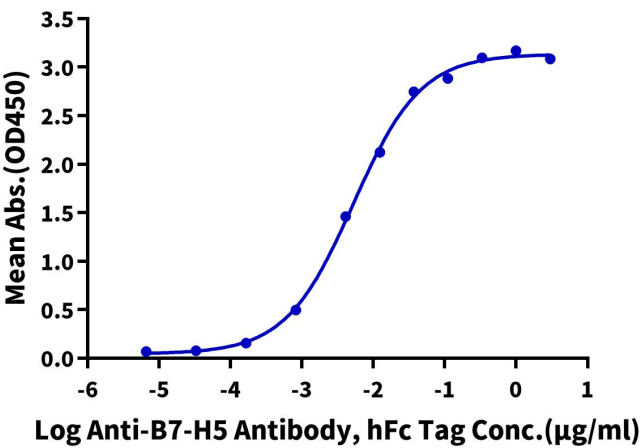


The purity of Cynomolgus/Rhesus macaque B7-H5 is greater than 95% as determined by SEC-HPLC.

ELISA Data

Cynomolgus/Rhesus macaque B7-H5, His Tag ELISA

0.05µg Cynomolgus/Rhesus macaque B7-H5, His Tag Per Well



Immobilized Cynomolgus/Rhesus macaque B7-H5, His Tag at 0.5µg/ml (100µl/Well) on the plate. Dose response curve for Anti-B7-H5 Antibody, hFc Tag with the EC50 of 5.9ng/ml determined by ELISA.