



## BTF3L4 Antibody

**E11-19189C**

**Catalog Number:** E11-19189C

**Concentration:** 1mg/ml, 100ug/100ul

**Swiss-Prot No.:** Q96K17

**Other Names:** Transcription factor BTF3 homolog 4; Basic transcription factor 3-like 4; BTF3L4

**Storage/Stability:** Store at -20°C/1 year

**Form of Antibody:** Rabbit IgG in phosphate buffered saline (without  $Mg^{2+}$  and  $Ca^{2+}$ ), pH 7.4, 150mM NaCl, 0.02% sodium azide and 50% glycerol.

**Immunogen:** The antiserum was produced against synthesized peptide derived from internal of human BTF3L4.

**Purification:** The antibody was affinity-purified from rabbit antiserum by affinity-chromatography using epitope-specific immunogen.

**Specificity:** BTF3L4 antibody detects endogenous levels of total BTF3L4 protein.

**Reactivity:** Human (Identities = 100%, Positives = 100%); Mouse (Identities = 100%, Positives = 100%)

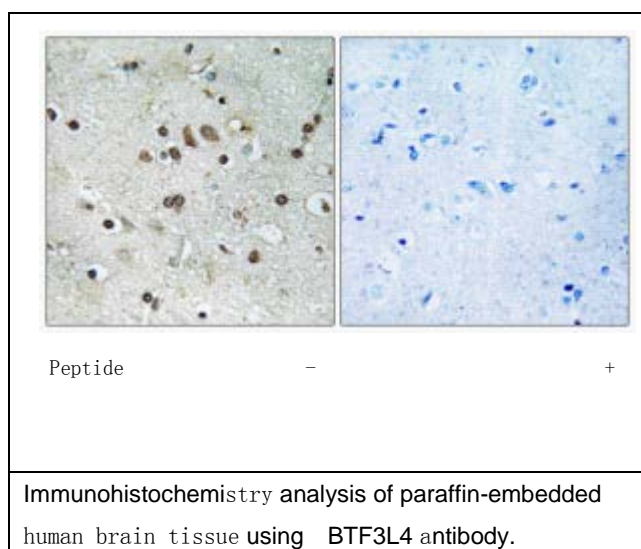
**Applications:** IHC: 1:50~1:100 ELISA: 1:40000

**References:**

Ota T., Nat. Genet. 36:40-45(2004).

Gregory S.G., Nature 441:315-321(2006).

The MGC Project Team, Genome Res. 14:2121-2127(2004).



**For Research Use Only**