



Vimentin (Phospho-Ser56) Antibody

E11-1243A

Catalog Number: E11-1243A

Concentration: 1mg/ml

Swiss-Prot No.: P08670

Other Names: VIME, vimentin

All Sites: Human: Ser56

Storage/Stability: Store at -20 °C/1 year

Form of Antibody: Rabbit IgG in phosphate buffered saline (without Mg^{2+} and Ca^{2+}), pH 7.4, 150mM NaCl, 0.02% sodium azide and 50% glycerol.

Immunogen: The antiserum was produced against synthesized phosphopeptide derived from human Vimentin around the phosphorylation site of serine 56 (A-S-S^P-P-G).

Purification: The antibody was affinity-purified from rabbit antiserum by affinity-chromatography using

epitope-specific phosphopeptide. The antibody against non-phosphopeptide was removed by chromatography using non-phosphopeptide corresponding to the phosphorylation site.

Specificity: Vimentin (Phospho-Ser56) antibody detects endogenous levels of Vimentin only when phosphorylated at serine 56.

Reactivity: Human

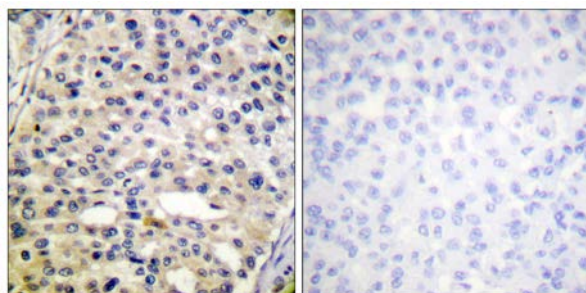
Applications: WB: 1:500~1:1000 IHC: 1:50~1:100
ELISA: 1:20000

References:

Ota T., Nat. Genet. 36:40-45(2004).

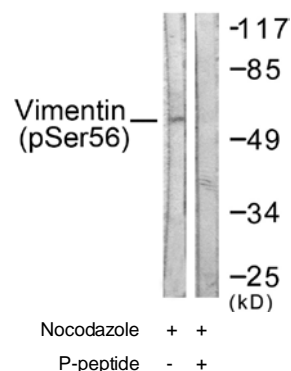
Rasmussen R.K., Electrophoresis 18:588-598(1997).

Gupta A.K., Gene 86:303-304(1990).



P-peptide - +

Immunohistochemistry analysis of paraffin-embedded human breast carcinoma tissue using Vimentin (Phospho-Ser56) antibody.



Western blot analysis of extracts from A549 cells, treated with Nocodazole (1ug/ml, 16hours), using Vimentin (Phospho-Ser56) antibody.

For Research Use Only