



## CD247 Mouse Monoclonal Antibody

E10-30017

**Background:** The protein encoded by this gene is T-cell receptor zeta, which together with T-cell receptor alpha/beta and gamma/delta heterodimers, and with CD3-gamma, -delta and -epsilon, forms the T-cell receptor-CD3 complex. The zeta chain plays an important role in coupling antigen recognition to several intracellular signal-transduction pathways. Low expression of the antigen results in impaired immune response. Two alternatively spliced transcript variants encoding distinct isoforms have been found for this gene.

**Catalog Number:** E10-30017

**Amount:** 100µg/100µl

**Clone Number:** 4B10

**Species:** Mouse IgG1

**MW** 18kDa

**Aliases:** T3Z; CD3H; CD3Q; CD3Z; TCRZ; CD3-ZETA; CD247

**Entrez Gene:** 919

**Immunogen:** Purified recombinant fragment of human CD247 expressed in E. Coli.

**Storage:** Store at 4°C, for long term storage, store at -20°C.

**Formulation:** Ascitic fluid containing 0.03% sodium azide.

**Species Reactivities:** Human

**Tested Applications:** WB, IHC, IF, FC, ELISA. Not yet tested in other applications.

**Application notes:** WB: 1/500 - 1/2000, IHC: 1/200-1/1000, IF: 1/200-1/1000, FC: 1/200-1/400, ELISA: Propose dilution 1/10000.

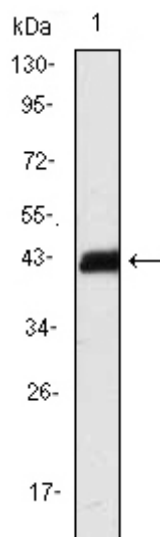


Figure 1: Western blot analysis using CD247 mAb against CD247-hlgGfc transfected HEK293 cell lysate.

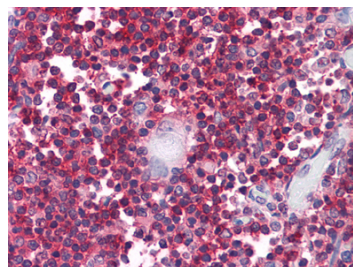


Figure 2: Immunohistochemical analysis of paraffin-embedded human Thymus tissues using anti-CD247 mouse mAb

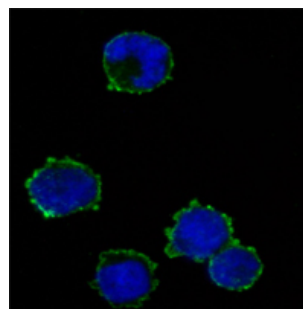


Figure3: Immunofluorescence analysis of K562 cells using anti-CD247 mAb (green). Blue: DRAQ5 fluorescent DNA dye.

**For Research Use Only**