



EhpB1 Mouse Monoclonal Antibody

E10-20184

Background: EhpB1. EPH receptor B1. It is a receptor for ephrin-B family members. Ephrin receptors and their ligands, the ephrins, mediate numerous developmental processes, particularly in the nervous system. Based on their structures and sequence relationships, ephrins are divided into the ephrin-A (EFNA) class, which are anchored to the membrane by a glycosylphosphatidylinositol linkage, and the ephrin-B (EFNB) class, which are transmembrane proteins. The Eph family of receptors are divided into 2 groups based on the similarity of their extracellular domain sequences and their affinities for binding ephrin-A and ephrin-B ligands. Ephrin receptors make up the largest subgroup of the receptor tyrosine kinase (RTK) family.

Catalog Number: E10-20184

Amount: 100µg/100µl

Clone Number: 5F10A4

Species: Mouse IgG1

MW: 110kDa

Aliases: ELK; NET; Hek6; EPHT2; EPHB1

Entrez Gene: 2047

Immunogen: Purified recombinant fragment of EphB1 (aa19-133) expressed in E. Coli.

Storage: Store at 4 °C for long term at -20 °C

Formulation: Ascitic fluid containing 0.03% sodium azide.

Species Reactivities: Human

Tested Applications: WB, IHC, ELISA. Not yet tested in other applications. Determining optimal working dilutions by titration test.

Application notes: WB.1/500 - 1/2000.IHC.1/200 - 1/1000, ELISA. Propose dilution 1/10000.

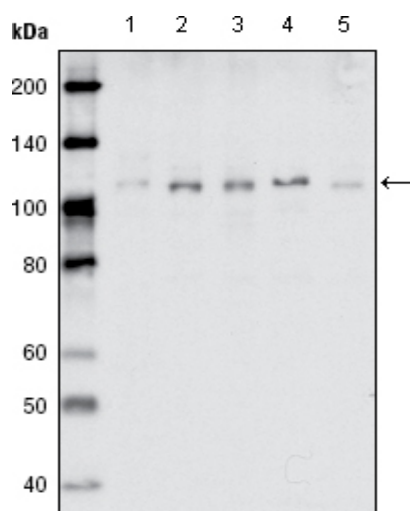


Figure 1. Western blot analysis using EhpB1 mouse mAb against MDA-MB-468 (1), MDA-MB-453 (2), MCF-7 (3), T47D (4) and SKBR-3 (5) cell lysate.

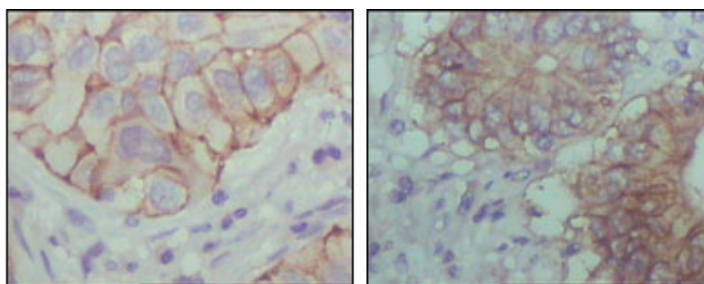


Figure 2. Immunohistochemical analysis of paraffin-embedded human lung cancer (left) and colon cancer (right) showing cytoplasmic localization with DAB staining using EphB1 mouse mAb.

For Research Use Only