



## CD3 Mouse Monoclonal Antibody

E10-20024

**Background:** CD3 is a component of T cell surface receptor (TCR), it contains 5 invariable chains. gamma-, delta-, epsilon-, and zeta/eta. Clevers et al. (1988) showed the TCR/CD3 complex consists of either a TCR alpha/beta or TCR gamma/delta heterodimer coexpressed at the cell surface with the invariant subunits, CD3 is responsible for the signal transduction of the TCR.

**Catalog Number:** E10-20024

**Amount:** 100µg/100µl

**Clone Number:** 4D10A6

**Species:** Mouse IgG2a

**Aliases:** T3Z; CD247

**Entrez Gene:** 919

**Immunogen:** Purified recombinant fragment of human CD3 expressed in E. Coli.

**Storage:** Store at 4°C, for long term storage, store at -20°C

**Formulation:** Purified antibody in PBS containing 0.03% sodium azide.

**Species Reactivities:** Human

**Tested Applications:** IHC, ELISA. Not yet tested in other applications. Determining optimal working dilutions by titration test.

**Application notes:** IHC. 1/200 - 1/2000, ELISA. Propose dilution 1/10000.

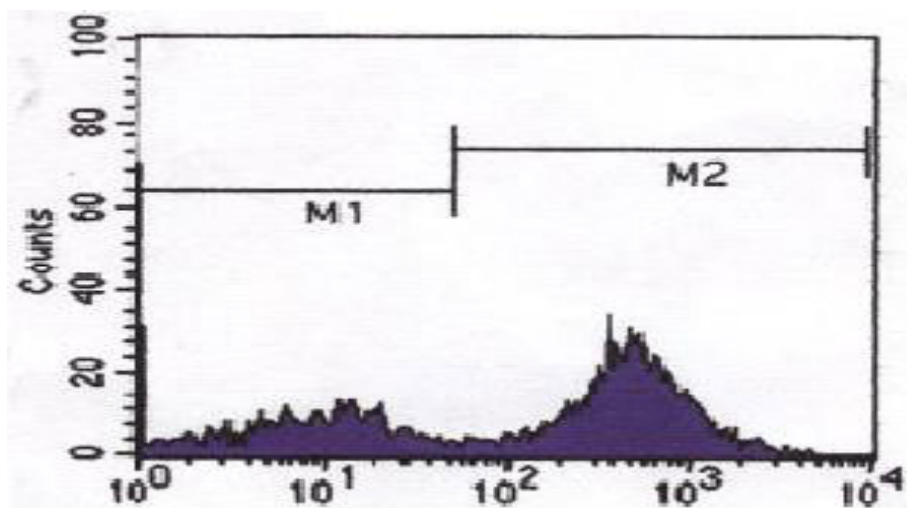


Figure 1. FCM analysis CD3 expressed in human peripheral blood cells.