



CD10 Mouse Monoclonal Antibody

E10-20022

Background: CD10 is a 100kDa glycoprotein, also designated Common Acute Lymphocytic Leukemia Antigen (CALLA). It is a cell surface enzyme with neutral metalloendopeptidase activity which inactivates a variety of biologically active peptides. CD10 is expressed on the cells of lymphoblastic, Burkitt's, and follicular germinal center lymphomas, and on cells from patients with chronic myelocytic leukemia (CML). It is also expressed on the surface of normal early lymphoid progenitor cells, immature B cells within adult bone marrow and germinal center B cells within lymphoid tissue. CD10 is also present on breast myoepithelial cells, bile canaliculi, fibroblasts, with especially high expression on the brush border of kidney and gut epithelial cells.

Catalog Number: E10-20022

Amount: 100µg/100µl

Clone Number: 2A1H5E1

Species: Mouse IgG2b

Aliases: CD10

Entrez Gene: 4311

Immunogen: Purified recombinant fragment of human CD-10 expressed in E. Coli.

Storage: Store at 4°C, for long term storage, store at -20°C

Formulation: Purified antibody in PBS containing 0.03% sodium azide.

Species Reactivities: Human

Tested Applications: IHC, ELISA. Not yet tested in other applications. Determining optimal working dilutions by titration test.

Application notes: IHC. 1/200 - 1/2000, ELISA. Propose dilution 1/10000.

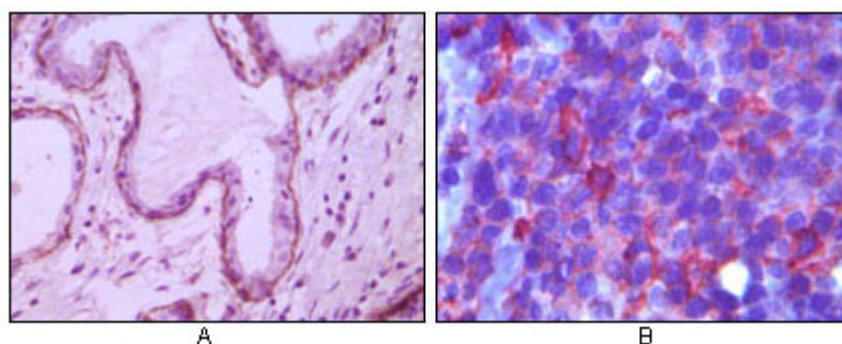


Figure 1. Immunohistochemical analysis of paraffin-embedded human breast ductal myoepithelium (A) and lymph tissue (B), showing cytoplasmic (A) and membrane (B) localization using CD10 mouse mAb with DAB staining (A) and AEC staining (B).

For Research Use Only