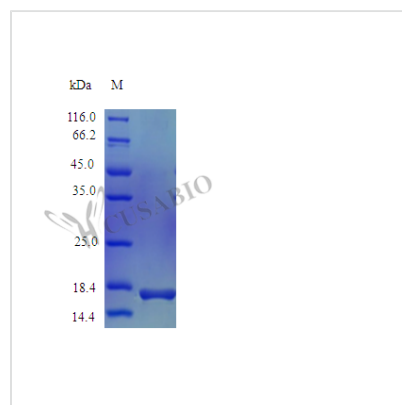




# Recombinant Mouse Interleukin-36 beta protein(IL36b) (Active)

<b>Product Code</b>	CSB-AP003121MO
<b>Uniprot No.</b>	Q9D6Z6
<b>Storage Buffer</b>	0.2 μm filtered PBS, pH 7.4, 5% trehalose ,lyophilized
<b>Product Type</b>	Interleukin
<b>Species</b>	Mus musculus (Mouse)
<b>Biological Activity</b>	Fully biologically active when compared to standard. The ED50 as determined by inducing IL-6 secretion in murine NIH/3T3 cells is less than 10 ng/ml, corresponding to a specific activity of >1.0x10 <sup>5</sup> IU/mg.
<b>Purity</b>	>97% as determined by SDS-PAGE and HPLC.
<b>Sequence</b>	SSQSPRNYRV HDSQQMVWVL TGNTLTAVPA SNNVKPVILS LIACRDTEFQ DVKKGNLVFL GIKNRNLCFC CVEMEGKPTL QLKEVDIMNL YKERKAQKAF LFYHGIEGST SVFQSVLYPG WFIATSSIER QTILTHQRG KLVNTNFYIE SEK
<b>Lead Time</b>	5-10 business days
<b>Research Area</b>	Immunology
<b>Source</b>	E.coli
<b>Gene Names</b>	Il36b
<b>Expression Region</b>	31-183aa
<b>Tag Info</b>	Tag-Free
<b>Mol. Weight</b>	17.4 kDa
<b>Protein Description</b>	Full Length of Mature Protein
<b>PubMed ID</b>	11991723; 16141072; 19717513; 21860022; 21965679

## Image



## Typical

Less than 1.0 EU/μg as determined by LAL method.