

Anti-CD57 Antibody

Catalog #	Source	Reactivity	Applications
CPA8543	Mouse	H	IF, FC
Description	Mouse monoclonal antibody to CD57		
Purification	The antibody was purified by affinity chromatography.		
Specificity	Recognises human CD57.		
Clonality	Monoclonal		
Conjugation			
Form	IgM. Liquid in PBS, pH 7.3, and 0.02% sodium azide.		
Gene Symbol	B3GAT1		
Alternative Names	GLCATP; Galactosylgalactosylxylosylprotein 3-beta-glucuronosyltransferase 1; Beta-1.3-glucuronosyltransferase 1; Glucuronosyltransferase P; GlcAT-P; UDP-GlcUA:glycoprotein beta-1.3-glucuronosyltransferase; GlcUAT-P		
Entrez Gene	27087 (Human)		
SwissProt	Q9P2W7 (Human)		
Storage/Stability	Shipped and store at 4°C for one year. Do not freeze.		
Directions for Use	<ol style="list-style-type: none"> 1. Take 100 ul peripheral blood anticoagulated by EDTA and add to the bottom of 5 ml tube. 2. Add appropriate amount of antibody to the bottom of flow tube mixing with the whole blood; incubate for 30 minutes at room temperature. 3. Add 2 ml RBC lysis buffer; incubate for 10 minutes after mixing; dissolve red blood cells. 4. Sample tube is set to 1000 rpm centrifugation for 5 minutes; discard the supernatant. 		

Application key: E- ELISA, WB- Western blot, IH- Immunohistochemistry, IF- Immunofluorescence, FC- Flow cytometry, IC- Immunocytochemistry, IP- Immunoprecipitation, ChIP- Chromatin Immunoprecipitation, EMSA- Electrophoretic Mobility Shift Assay, BL- Blocking, SE- Sandwich ELISA, CBE- Cell-based ELISA, RNAi- RNA interference

Species reactivity key: H- Human, M- Mouse, R- Rat, B- Bovine, C- Chicken, D- Dog, G- Goat, Mk- Monkey, P- Pig, Rb- Rabbit, S- Sheep, Z- Zebrafish

COHESION BIOSCIENCES LIMITED

WEB
www.cohesionbio.com

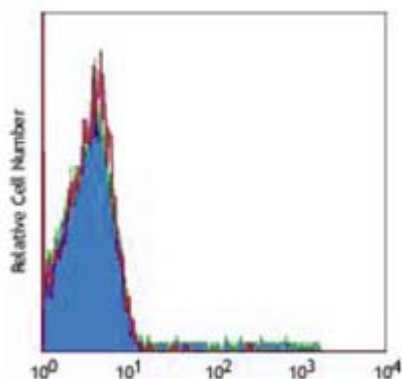
ORDER
order@cohesionbio.com

SUPPORT
techsupport@cohesionbio.com

CUSTOM
custom@cohesionbio.com

Product Data Sheet

5. Add 2 ml PBS wash buffer to resuspend the cells; then 1000 rpm centrifugation for 5 minutes; discard the supernatant.
6. Add appropriate amount of fluorescent-labeled anti-mouse IgGs and incubate for 20 minutes away from light at room temperature.
7. Add 2 ml PBS wash buffer to resuspend the cells; then 1000 rpm centrifugation for 5 minutes; discard the supernatant.
8. Add 0.5 ml PBS wash buffer to resuspend the cells and detect by flow cytometry (sample should be determined on the day on the machine and can also be added fixation overnight at 4 °C then measured).



Flow cytometric analysis of human peripheral blood lymphocytes using Anti-CD57 Antibody, followed by anti-mouse IgG PE.

Application key: E- ELISA, WB- Western blot, IH- Immunohistochemistry, IF- Immunofluorescence, FC- Flow cytometry, IC- Immunocytochemistry, IP- Immunoprecipitation, ChIP- Chromatin Immunoprecipitation, EMSA- Electrophoretic Mobility Shift Assay, BL- Blocking, SE- Sandwich ELISA, CBE- Cell-based ELISA, RNAi- RNA interference

Species reactivity key: H- Human, M- Mouse, R- Rat, B- Bovine, C- Chicken, D- Dog, G- Goat, Mk- Monkey, P- Pig, Rb- Rabbit, S- Sheep, Z- Zebrafish

COHESION BIOSCIENCES LIMITED

WEB
www.cohesionbio.com

ORDER
order@cohesionbio.com

SUPPORT
techsupport@cohesionbio.com

CUSTOM
custom@cohesionbio.com