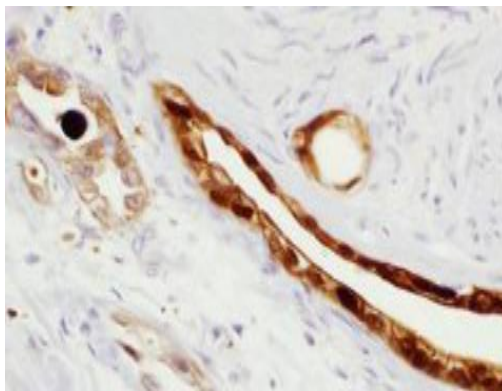


Mouse Anti-Human S100P Clone 16/f5 mAb

Catalog No.	MON3373	Quantity:	1 ml
Specificity:	S100P is a member of the S100 family of proteins. The family is expressed in a wide range of cells and is thought to play a role in cell cycle progression and in differentiation. S100P was identified in the placenta at high levels. Anti-S100P with nuclear or nuclear/cytoplasmic staining immunoreactivity can be seen in essentially 100% of pancreatic ductal adenocarcinoma in pancreatic resection, and fine		
Host:	Mouse		
Clone:	16/f5		
Formulation:	Anti-S100P is a mouse monoclonal antiserum against S100P and is diluted in Tris buffer, pH 7.3-7.7, with 1% BSA, and preserved with <0.1% sodium azide. Precaution: Sodium azide is a poisonous and hazardous substance which should be handled by trained staff only.		
Applications:	Paraffin Start working dilution 1:100-1:500*		
Application Notes:	* The dilutions set forth above are estimates; actual results may differ because of variability in methods and protocols. Validation of antibody performance/protocol is the responsibility of the end user.		
Storage & Stability:	Store antibody at 2-8°C until expiration date. Do not freeze		
Related Products:	Also available in a Ready To Use format upon request, 7.0 ml.		



NOT FOR HUMAN USE. FOR RESEARCH ONLY. NOT FOR DIAGNOSTIC OR THERAPEUTIC USE.

