

## CRYM

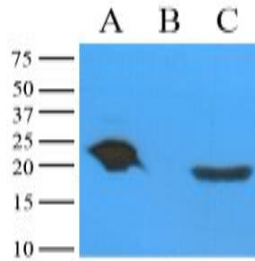
### Mouse Anti-Human Crystallin Clone c9F2 mAb

<b>Catalog No.</b>	CSI15545A CSI15545B	<b>Quantity:</b>	50 µl 100 µl
<b>Alternate Names:</b>	DFNA40, THBP, NADP-regulated thyroid-hormone binding protein.		
<b>Description:</b>	Crystallins alpha are composed of two gene products; alpha A and alpha B, for acidic and basic, respectively. crystallins alpha can be induced by heat shock and are members of the small heat shock protein (sHSP also known as the HSP20). They act as molecular chaperones and hold them in large soluble aggregates. These heterogeneous aggregates consist of 30-40 subunits; the alpha A and alpha B subunits have a 3:1 ratio, respectively. Two additional functions of alpha crystallins are an autokinase activity and participation in the intracellular architecture. The expression of alpha-A is preferentially restricted to the lens cell.		
<b>Concentration:</b>	1 mg/ml		
<b>Gene ID:</b>	1428		
<b>Protein Accession No.:</b>	NP_000385		
<b>Immunogen:</b>	Recombinant human Crystallin alpha A (1-173 aa) purified from <i>E. coli</i>		
<b>Isotype:</b>	Mouse IgG <sub>1</sub> heavy chain and κ light chain		
<b>Clone:</b>	Anti-human Crystallin alpha A mAb, clone c9F2, is derived from hybridization of mouse SP2/O myeloma cells with spleen cells from BALB/c mice immunized with recombinant Crystallin alpha A.		
<b>Formulation:</b>	Liquid. Supplied in Phosphate-Buffered Saline (pH 7.4) with 0.1% Sodium Azide. <b>Precaution:</b> Sodium azide is a poisonous and hazardous substance which should be handled by trained staff only.		
<b>Applications:</b>	ELISA, WB		
<b>Application Notes:</b>	The antibody has been tested by ELISA and by Western blot analysis to assure specificity and reactivity. Since application varies, however, each investigation should titrate the reagent to obtain optimal results. Recommended dilution range for Western blot analysis: 1:500 ~ 1:2000. Recommended starting dilution : 1:1000.		
<b>Storage &amp; Stability:</b>	Can be stored at +4°C. For long term storage, aliquot and store at -20°C. . <b>Avoid repeated freezing and thawing cycles.</b>		



## Western blot analysis

Mouse eye extracts and recombinant proteins (Crystallin-alpha A and B) were resolved by electrophoresis, transferred to PVDF membrane and probed with anti-Crystallin alpha A (1:1000). Proteins were visualized using a goat anti-mouse secondary antibody conjugated to HRP and a DAP detection system. This antibody is not shown cross-activity about Crystallin alpha B.



A: Crystallin-alpha A recombinant protein  
B: Crystallin-alpha B recombinant protein  
C: Mouse eye lysates

**NOT FOR HUMAN USE. FOR RESEARCH ONLY. NOT FOR DIAGNOSTIC OR THERAPEUTIC USE.**



**Cell Sciences®**  
480 Neponset Street  
Bldg 12A  
Canton, MA 02021

Toll Free: 888-769-1246  
Phone: 781-828-0610  
Fax: 781-828-0542

E-mail: [info@cellsciences.com](mailto:info@cellsciences.com)  
Website: [www.cellsciences.com](http://www.cellsciences.com)