

Cytokeratin 13 Ab

Cat.#: AF5102
Size: 100ul,200ul

Concn.: 1mg/ml
Source: Rabbit

Mol.Wt.: 50 kDa
Clonality: Polyclonal

Application: WB 1:500-1:2000 IHC 1:50-1:200, IF/ICC 1:100-1:500

Reactivity: Human, Mouse, Rat

Purification: The antiserum was purified by peptide affinity chromatography using SulfoLink™ Coupling Resin (Thermo Fisher Scientific).

Specificity: Cytokeratin 13 Ab detects endogenous levels of total Cytokeratin 13.

Immunogen: A synthesized peptide derived from human Cytokeratin 13.

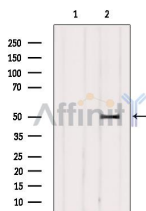
Uniprot: P13646

Description: Cytokeratin 13 is a member of the keratin gene family. The keratins are intermediate filament proteins responsible for the structural integrity of epithelial cells and are subdivided into cytokeratins and hair keratins. Most of the type I cytokeratins consist of acidic proteins which are arranged in pairs of heterotypic keratin chains.

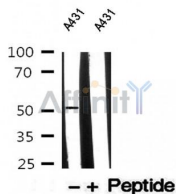
Tissue Specificity: Expressed in some epidermal sweat gland ducts (at protein level) and in exocervix, esophagus and placenta.

Similarity: Belongs to the intermediate filament family.

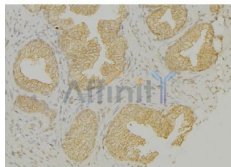
Storage Condition and Buffer: Rabbit IgG in phosphate buffered saline, pH 7.4, 150mM NaCl, 0.02% sodium azide and 50% glycerol. Store at -20 °C. Stable for 12 months from date of receipt.



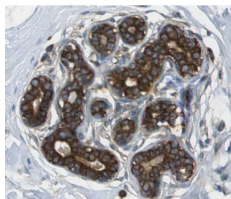
Western blot analysis of extracts from HeLa, using Cytokeratin 13 Ab. The lane on the left was treated with blocking peptide.



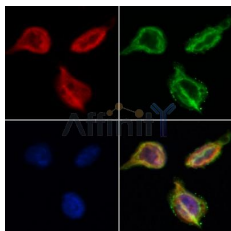
Western blot analysis of A431 whole cell lysates, using Cytokeratin 13 Ab. The lane on the Right is treated with the antigen-specific peptide.



AF5102 at 1/100 staining human colon cancer tissue by IHC-P. The sample was formaldehyde fixed and a heat mediated antigen retrieval step in citrate buffer was performed. The sample was then blocked and incubated with the Ab for 1.5 hours at 22°C. An HRP conjugated goat anti-rabbit Ab was used as the secondary.



IHC analysis of colon tissue, using Cytokeratin 13 Ab at 1:100.



AF5102 staining HeLa by IF/ICC. The samples were fixed with PFA and permeabilized in 0.1% Triton X-100, then blocked in 10% serum for 45 minutes at 25°C. Samples were then incubated with primary Ab (AF5102 1:200) and mouse anti-beta tubulin Ab (T0023 1:200) for 1 hour at 37°C. An AlexaFluor594 conjugated goat anti-rabbit IgG(H+L) Ab (S0006 1:200 Red) and an AlexaFluor488 conjugated goat anti-mouse IgG(H+L) Ab (S0017 1:600 Green) were used as the secondary

IMPORTANT: For western blot, incubate membrane with diluted primary Ab in 5% w/v milk, 1X TBS, 0.1% Tween@20 at 4°C with gentle shaking, overnight.

For Research Use Only. Not for use in diagnostic and therapeutic procedures. Not for resale without express authorization.