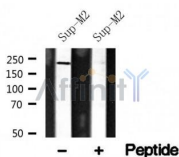


ALK Ab

Cat.#: AF4800	Concn.: 1mg/ml	Mol.Wt.: 80kD(NPM-ALK) 220kDa(ALK)
Size: 50ul,100ul,200ul	Source: Rabbit	Clonality: Polyclonal

Application:	WB 1:500-1:2000
Reactivity:	Human,Mouse,Rat
Purification:	The antiserum was purified by peptide affinity chromatography using SulfoLink™ Coupling Resin (Thermo Fisher Scientific).
Specificity:	ALK Ab detects endogenous levels of ALK.
Immunogen:	A synthesized peptide derived from human ALK.
Uniprot:	Q9UM73
Subcellular Location:	Cell membrane. Membrane attachment was crucial for promotion of neuron-like differentiation and cell proliferation arrest through specific activation of the MAP kinase pathway.
Tissue Specificity:	Expressed in brain and CNS. Also expressed in the small intestine and testis, but not in normal lymphoid cells.
Similarity:	Belongs to the protein kinase superfamily. Tyr protein kinase family. Insulin receptor subfamily.
Storage Condition and Buffer:	Rabbit IgG in phosphate buffered saline , pH 7.4, 150mM NaCl, 0.02% sodium azide and 50% glycerol.Store at -20 °C.Stable for 12 months from date of receipt.



Western blot analysis of ALK in lysates of Sup-M2, using ALK Ab(AF4800).

IMPORTANT: For western blot, incubate membrane with diluted primary Ab in 5% w/v milk , 1X TBS, 0.1% Tween@20 at 4°C with gentle shaking, overnight.

procedures. Not for resale without express authorization.