

## GKAP Ab

Cat.#: AF4779  
Size: 50ul,100ul,200ul

Concn.: 1mg/ml  
Source: Rabbit

Mol.Wt.: 90-150kDa  
Clonality: Polyclonal

Application: WB 1:500-1:2000

Reactivity: Human, Mouse, Rat

Purification: The antiserum was purified by peptide affinity chromatography using SulfoLink™ Coupling Resin (Thermo Fisher Scientific).

Specificity: GKAP Ab detects endogenous levels of GKAP.

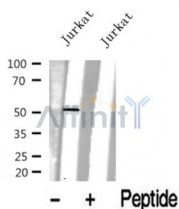
Immunogen: A synthesized peptide derived from human GKAP.

Uniprot: Q5VSY0

Subcellular Location: Golgi apparatus.

Similarity: Belongs to the GKAP1 family.

Storage Condition and Buffer: Rabbit IgG in phosphate buffered saline , pH 7.4, 150mM NaCl, 0.02% sodium azide and 50% glycerol. Store at -20 °C. Stable for 12 months from date of receipt.



Western blot analysis of GKAP in lysates of Jurkat , using GKAP Ab(AF4779).

**IMPORTANT:** For western blot, incubate membrane with diluted primary Ab in 5% w/v milk , 1X TBS, 0.1% Tween@20 at 4°C with gentle shaking, overnight.

For Research Use Only. Not for use in diagnostic and therapeutic procedures. Not for resale without express authorization.