

GIT2 Ab

Cat.#: AF4772
Size: 50ul, 100ul, 200ul

Concn.: 1mg/ml
Source: Rabbit

Mol.Wt.: 84KDa
Clonality: Polyclonal

Application: WB 1:500-1:2000

Reactivity: Human

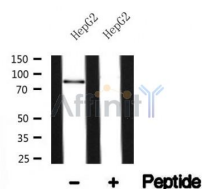
Purification: The antiserum was purified by peptide affinity chromatography using SulfoLink™ Coupling Resin (Thermo Fisher Scientific).

Specificity: GIT2 Ab detects endogenous levels of GIT2.

Immunogen: A synthesized peptide derived from human GIT2.

Uniprot: Q14161

Storage Condition and Buffer: Rabbit IgG in phosphate buffered saline, pH 7.4, 150mM NaCl, 0.02% sodium azide and 50% glycerol. Store at -20 °C. Stable for 12 months from date of receipt.



Western blot analysis of GIT2 in lysates of HepG2, using GIT2 Ab(AF4772).

IMPORTANT: For western blot, incubate membrane with diluted primary Ab in 5% w/v milk, 1X TBS, 0.1% Tween@20 at 4°C with gentle shaking, overnight.

For Research Use Only. Not for use in diagnostic and therapeutic procedures. Not for resale without express authorization.