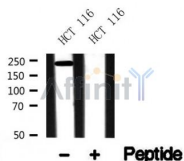


## Scribble Ab

Cat.#: AF4771	Concn.: 1mg/ml	Mol.Wt.: 240kDa
Size: 50ul,100ul,200ul	Source: Rabbit	Clonality: Polyclonal

Application:	WB 1:500-1:2000
Reactivity:	Human,Mouse
Purification:	The antiserum was purified by peptide affinity chromatography using SulfoLink™ Coupling Resin (Thermo Fisher Scientific).
Specificity:	Scribble Ab detects endogenous levels of Scribble.
Immunogen:	A synthesized peptide derived from human Scribble.
Uniprot:	Q14160
Subcellular Location:	Cell membrane. Cell junction > adherens junction. Cytoplasm. Targeting to cell-cell junctions which is CDH1-dependent is required for the pro-apoptotic activity. Localizes to neuronal post- and pre-synaptic regions.
Tissue Specificity:	Expressed in kidney, skeletal muscles, liver, lung, breast, intestine, placenta and skin mainly in epithelial cells (at protein level).
Similarity:	Belongs to the LAP (LRR and PDZ) protein family.
Storage Condition and Buffer:	Rabbit IgG in phosphate buffered saline , pH 7.4, 150mM NaCl, 0.02% sodium azide and 50% glycerol.Store at -20 °C.Stable for 12 months from date of receipt.



Western blot analysis of Scribble in lysates of HCT 116, using Scribble Ab(AF4771).

**IMPORTANT:** For western blot, incubate membrane with diluted primary Ab in 5% w/v milk , 1X TBS, 0.1% Tween@20 at 4°C with gentle shaking, overnight.