

Scribble Ab

Cat.#: AF4771
Size: 50ul,100ul,200ul

Concn.: 1mg/ml
Source: Rabbit

Mol.Wt.: 240kDa
Clonality: Polyclonal

Application: WB 1:500-1:2000

Reactivity: Human, Mouse

Purification: The antiserum was purified by peptide affinity chromatography using SulfoLink™ Coupling Resin (Thermo Fisher Scientific).

Specificity: Scribble Ab detects endogenous levels of Scribble.

Immunogen: A synthesized peptide derived from human Scribble.

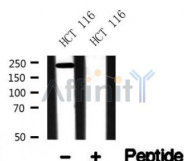
Uniprot: Q14160

Subcellular Location: Cell membrane. Cell junction > adherens junction. Cytoplasm. Targeting to cell-cell junctions which is CDH1-dependent is required for the pro-apoptotic activity. Localizes to neuronal post- and pre-synaptic regions.

Tissue Specificity: Expressed in kidney, skeletal muscles, liver, lung, breast, intestine, placenta and skin mainly in epithelial cells (at protein level).

Similarity: Belongs to the LAP (LRR and PDZ) protein family.

Storage Condition and Buffer: Rabbit IgG in phosphate buffered saline , pH 7.4, 150mM NaCl, 0.02% sodium azide and 50% glycerol. Store at -20 °C. Stable for 12 months from date of receipt.



Western blot analysis of Scribble in lysates of HCT 116, using Scribble Ab(AF4771).

IMPORTANT: For western blot, incubate membrane with diluted primary Ab in 5% w/v milk , 1X TBS, 0.1% Tween@20 at 4°C with gentle shaking, overnight.