

## RUNX2 Ab

Cat.#: AF4770  
Size: 50ul,100ul,200ul

Concn.: 1mg/ml  
Source: Rabbit

Mol.Wt.: 50-60 kDa  
Clonality: Polyclonal

Application: WB 1:500-1:2000

Reactivity: Human,Mouse,Rat

Purification: The antiserum was purified by peptide affinity chromatography using SulfoLink™ Coupling Resin (Thermo Fisher Scientific).

Specificity: RUNX2 Ab detects endogenous levels of RUNX2.

Immunogen: A synthesized peptide derived from human RUNX2.

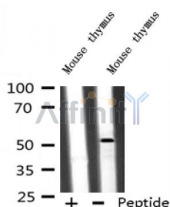
Uniprot: Q13950

Subcellular Location: Nucleus.

Tissue Specificity: Specifically expressed in osteoblasts.

Similarity: A proline/serine/threonine rich region at the C-terminus is necessary for transcriptional activation of target genes and contains the phosphorylation sites.

Storage Condition and Buffer: Rabbit IgG in phosphate buffered saline , pH 7.4, 150mM NaCl, 0.02% sodium azide and 50% glycerol.Store at -20 °C.Stable for 12 months from date of receipt.



Western blot analysis of RUNX2 in lysates of Mouse thymus , using RUNX2 Ab(AF4770).

**IMPORTANT:** For western blot, incubate membrane with diluted primary Ab in 5% w/v milk , 1X TBS, 0.1% Tween@20 at 4°C with gentle shaking, overnight.

For Research Use Only. Not for use in diagnostic and therapeutic procedures. Not for resale without express authorization.