

## PAK1 /PAK2 Ab

Cat.#: AF4763	Concn.: 1mg/ml	Mol.Wt.: 61-67kD (PAK2),68-74kD (PAK1/3)
Size: 50ul,100ul,200ul	Source: Rabbit	Clonality: Polyclonal

Application: WB 1:500-1:2000

Reactivity: Human,Mouse,Rat

Purification: The antiserum was purified by peptide affinity chromatography using SulfoLink™ Coupling Resin (Thermo Fisher Scientific).

Specificity: PAK1 /PAK2 Ab detects endogenous levels of PAK1 /PAK2.

Immunogen: A synthesized peptide derived from human PAK1 /PAK2.

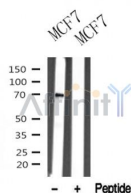
Uniprot: Q13153

Subcellular Location: Cytoplasm. Cell junction > focal adhesion. Recruited to focal adhesions upon activation.

Tissue Specificity: Overexpressed in gastric cancer cells and tissues (at protein level) (PubMed:25766321).

Similarity: Belongs to the protein kinase superfamily. STE Ser/Thr protein kinase family. STE20 subfamily.

Storage Condition and Buffer: Rabbit IgG in phosphate buffered saline , pH 7.4, 150mM NaCl, 0.02% sodium azide and 50% glycerol.Store at -20 °C.Stable for 12 months from date of receipt.



Western blot analysis of PAK1 /PAK2 in lysates of MCF-7, using PAK1 /PAK2 Ab(AF4763).

**IMPORTANT:** For western blot, incubate membrane with diluted primary Ab in 5% w/v milk , 1X TBS, 0.1% Tween@20 at 4°C with gentle shaking, overnight.

For Research Use Only. Not for use in diagnostic and therapeutic procedures. Not for resale without express authorization.